



**INTERNATIONAL
GEMOLOGICAL
INSTITUTE**

ELECTRONIC COPY

LABORATORY GROWN DIAMOND REPORT

LG478128523

LABORATORY GROWN DIAMOND REPORT

IGI LABORATORY GROWN DIAMOND IDENTIFICATION REPORT

July 6, 2022
IGI Report Number **LG478128523**
Description **LABORATORY GROWN DIAMOND**
Shape and Cutting Style **CUSHION MODIFIED BRILLIANT**
Measurements **12.60 X 10.56 X 7.23 MM**

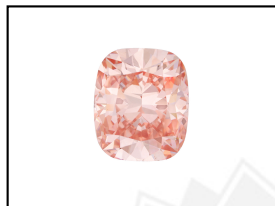
GRADING RESULTS

Carat Weight **7.49 CARATS**
Color Grade **FANCY VIVID PINK**
Clarity Grade **VS 2**

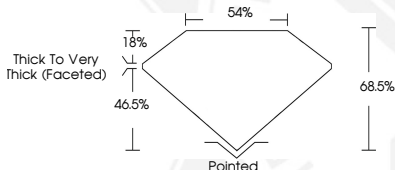
ADDITIONAL GRADING INFORMATION

Polish **VERY GOOD**
Symmetry **EXCELLENT**
Fluorescence **STRONG**
Inscription(s) **LABGROWN IGI LG478128523**

Comments: This Laboratory Grown Diamond was created by Chemical Vapor Deposition (CVD) process. Indications of post-growth treatment.



LASERSCRIBESM
Sample Images Used



**IGI LABORATORY GROWN
DIAMOND ID REPORT**

July 6, 2022
IGI Report Number **LG478128523**
CUSHION MODIFIED BRILLIANT
12.60 X 10.56 X 7.23 MM
Carat Weight **7.49 CARATS**
Color Grade **FANCY VIVID PINK**
Clarity Grade **VS 2**
Polish **VERY GOOD**
Symmetry **EXCELLENT**
Fluorescence **STRONG**
Inscription(s) **LABGROWN IGI
LG478128523**

Comments: This Laboratory Grown Diamond was created by Chemical Vapor Deposition (CVD) process. Indications of post-growth treatment.

**IGI LABORATORY GROWN
DIAMOND ID REPORT**

July 6, 2022
IGI Report Number **LG478128523**
CUSHION MODIFIED BRILLIANT
12.60 X 10.56 X 7.23 MM
Carat Weight **7.49 CARATS**
Color Grade **FANCY VIVID PINK**
Clarity Grade **VS 2**
Polish **VERY GOOD**
Symmetry **EXCELLENT**
Fluorescence **STRONG**
Inscription(s) **LABGROWN IGI
LG478128523**

Comments: This Laboratory Grown Diamond was created by Chemical Vapor Deposition (CVD) process. Indications of post-growth treatment.

THIS DOCUMENT WAS PRODUCED WITH THE FOLLOWING SECURITY MEASURES: SPECIAL DOCUMENT PAPER, INK SCREENS, WATERMARK, BACKGROUND DESIGN, HOLOGRAM AND OTHER SECURITY FEATURES NOT LISTED AND DO EXCEED DOCUMENT SECURITY INDUSTRY GUIDELINES.

For terms & conditions and to verify this report, please visit www.igi.org