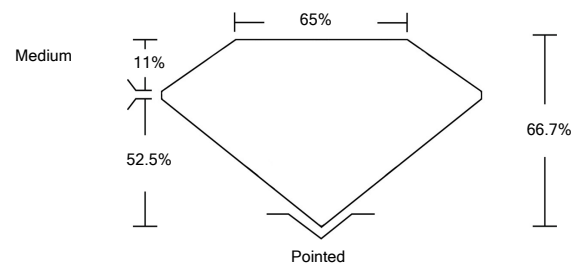




**LABORATORY GROWN DIAMOND REPORT**

LG476178024

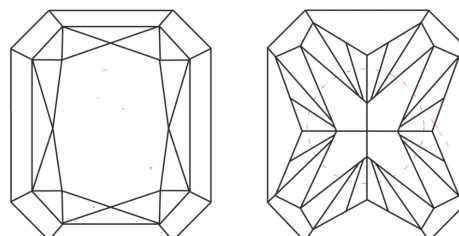
**PROPORTIONS**



**GRADING SCALES**

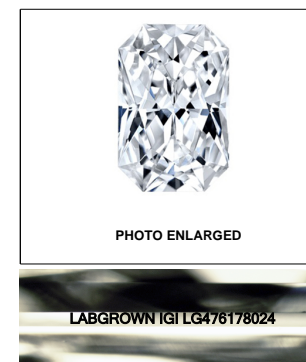
COLOR GRADING SCALE	CL	NC	FT	VL	LT	
	COLORLESS D-F	NEAR COLORLESS G-J	FAINT K-M	VERY LIGHT N-R	LIGHT S-Z	
CLARITY (10x) GRADING SCALE	FL	IF	VVS	VS	SI	I
	FLAWLESS INTERNALLY FLAWLESS	VERY VERY SLIGHTLY INCLUDED	VERY SLIGHTLY INCLUDED	SLIGHTLY INCLUDED	INCLUDED	INCLUDED

**CLARITY CHARACTERISTICS**



**KEY TO SYMBOLS**

Red symbols indicate internal characteristics.  
Green symbols indicate external characteristics.



LABGROWN IGI LG476178024

LASERSCRIBE<sup>SM</sup>

06/01/2021

IGI Report Number

**LG476178024**

Shape and Cutting Style

**CUT CORNERED  
RECTANGULAR MODIFIED  
BRILLIANT**

Measurements

**9.71 x 8.08 x 5.39 mm**

**GRADING RESULTS**

Carat Weight

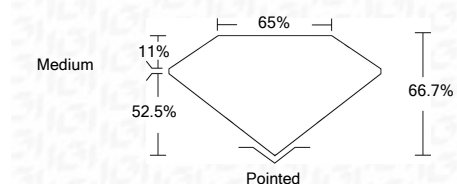
**3.50 CARATS**

Color Grade

**J**

Clarity Grade

**VS 2**



**ADDITIONAL GRADING INFORMATION**

Polish

**EXCELLENT**

Symmetry

**EXCELLENT**

Fluorescence

**NONE**

Inscription(s)

**LABGROWN IGI LG476178024**

Comments: This Laboratory Grown Diamond was created by Chemical Vapor Deposition (CVD) growth process and may include post-growth treatment  
Type IIa



**IGI**



06/01/2021  
IGI Report No. LG476178024  
**CUT CORNERED RECT. MODIFIED  
BRILLIANT**  
9.71 x 8.08 x 5.39 mm  
Carat Weight  
Color Grade  
Clarity Grade  
Depth  
Table  
Girdle  
Culet  
Polish  
Symmetry  
Fluorescence  
Inscription(s)  
Comments:  
3.50 CARATS  
J  
VS 2  
66.7%  
65%  
Medium  
Pointed  
EXCELLENT  
EXCELLENT  
NONE  
LABGROWN IGI  
LG476178024

This Laboratory Grown Diamond was created by Chemical Vapor Deposition (CVD) growth process and may include post-growth treatment  
Type IIa