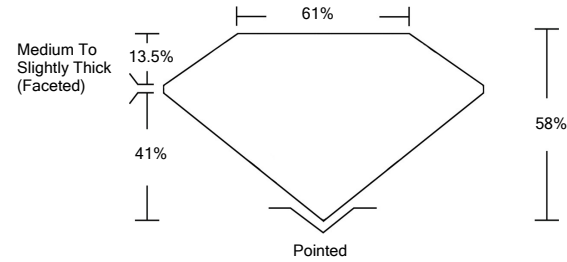




LG476157442

LABORATORY GROWN DIAMOND REPORT

PROPORTIONS



GRADING SCALES

Table with 5 columns for Color Grading Scale (CL, NC, FT, VLT, LT) and 5 columns for Clarity (10x) Grading Scale (FL, IF, VVS, VS, SI, I).

The laboratory grown diamond described in this Report (Report) has been graded, tested, analyzed, examined and/or inscribed by International Gemological Institute (IGI). A laboratory grown diamond is one that has essentially the same chemical, physical and optical properties as a mined diamond...

05/12/2021 IGI Report Number LG476157442 Shape and Cutting Style HEART BRILLIANT Measurements 8.86 x 10.48 x 6.08 mm

GRADING RESULTS

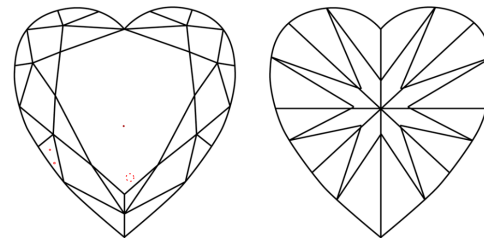
Carat Weight 3.36 CARATS Color Grade H Clarity Grade VS 1

ADDITIONAL GRADING INFORMATION

Polish EXCELLENT Symmetry VERY GOOD Fluorescence NONE Inscription(s) LABGROWN IGI LG476157442

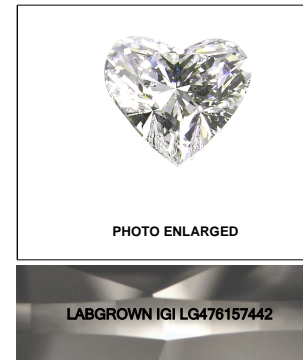
Comments: This Laboratory Grown Diamond was created by Chemical Vapor Deposition (CVD) growth process and may include post-growth treatment. Type IIa

CLARITY CHARACTERISTICS



KEY TO SYMBOLS

Red symbols indicate internal characteristics. Green symbols indicate external characteristics.



LASERSCRIBE SM

05/12/2021 IGI Report Number LG476157442 Shape and Cutting Style HEART BRILLIANT Measurements 8.86 x 10.48 x 6.08 mm

GRADING RESULTS

Carat Weight 3.36 CARATS Color Grade H Clarity Grade VS 1

ADDITIONAL GRADING INFORMATION

Polish EXCELLENT Symmetry VERY GOOD Fluorescence NONE Inscription(s) LABGROWN IGI LG476157442

Comments: This Laboratory Grown Diamond was created by Chemical Vapor Deposition (CVD) growth process and may include post-growth treatment. Type IIa



IGI



05/12/2021 IGI Report No. LG476157442 HEART BRILLIANT 8.86 x 10.48 x 6.08 mm 3.36 CARATS H VS 1 58% 61% Medium To Slightly Thick (Faceted) Pointed EXCELLENT VERY GOOD NONE LABGROWN IGI LG476157442

This Laboratory Grown Diamond was created by Chemical Vapor Deposition (CVD) growth process and may include post-growth treatment. Type IIa