



LG474137358

LABORATORY GROWN DIAMOND REPORT

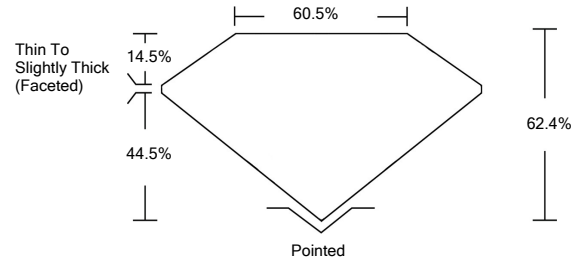
05/03/2021
IGI Report Number LG474137358
Shape and Cutting Style OVAL BRILLIANT
Measurements 13.55 x 9.75 x 6.08 mm

GRADING RESULTS
Carat Weight 5.04 CARATS
Color Grade D
Clarity Grade VVS 2

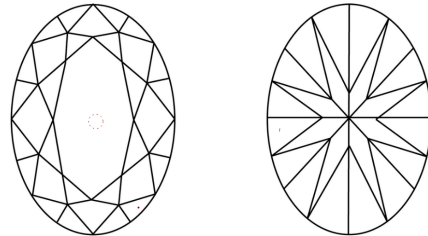
ADDITIONAL GRADING INFORMATION
Polish EXCELLENT
Symmetry EXCELLENT
Fluorescence NONE
Inscription(s) LABGROWN IGI LG474137358

Comments: As Grown - No indication of post-growth treatment. This Laboratory Grown Diamond was created by High Pressure High Temperature (HPHT) growth process. Type II

PROPORTIONS



CLARITY CHARACTERISTICS



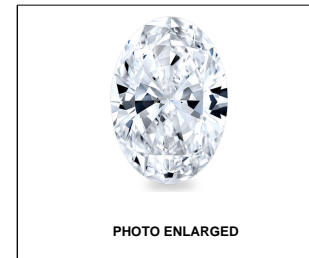
KEY TO SYMBOLS

Red symbols indicate internal characteristics. Green symbols indicate external characteristics.

GRADING SCALES

Table with 5 columns for Color Grading Scale (CL to LT) and Clarity (10x) Grading Scale (FL to I).

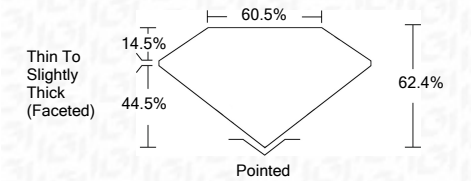
The laboratory grown diamond described in this Report (Report) has been graded, tested, analyzed, examined and/or inscribed by International Gemological Institute (IGI). A laboratory grown diamond is one that has essentially the same chemical, physical and optical properties as a mined diamond...



LASERSCRIBE SM

05/03/2021
IGI Report Number LG474137358
Shape and Cutting Style OVAL BRILLIANT
Measurements 13.55 x 9.75 x 6.08 mm

GRADING RESULTS
Carat Weight 5.04 CARATS
Color Grade D
Clarity Grade VVS 2



ADDITIONAL GRADING INFORMATION
Polish EXCELLENT
Symmetry EXCELLENT
Fluorescence NONE
Inscription(s) LABGROWN IGI LG474137358

Comments: As Grown - No indication of post-growth treatment. This Laboratory Grown Diamond was created by High Pressure High Temperature (HPHT) growth process. Type II



IGI

05/03/2021
IGI Report No. LG474137358
OVAL BRILLIANT
Carat Weight 5.04 CARATS
Color Grade D
Clarity Grade VVS 2
Depth 62.4%
Table 14.5%
Girdle 44.5%
Thin To Slightly Thick (Faceted)
Culet Pointed
Polish EXCELLENT
Symmetry EXCELLENT
Fluorescence NONE
Inscription(s) LABGROWN IGI LG474137358

Comments: As Grown - No indication of post-growth treatment. This Laboratory Grown Diamond was created by High Pressure High Temperature (HPHT) growth process. Type II

