



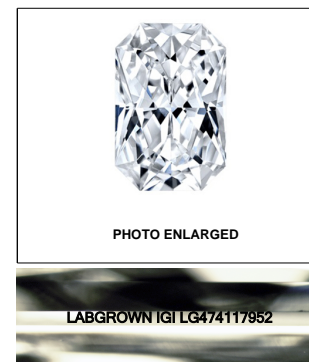
Diagram illustrating the proportions of a diamond-shaped face shape:

- Medium
- 15%
- 64.5%
- 49%
- 67.5%
- Pointed

Red symbols indicate internal characteristics.
Green symbols indicate external characteristics.

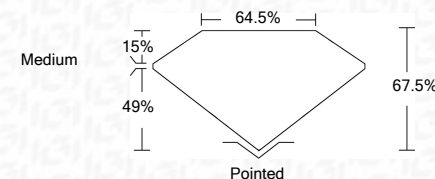
LABORATORY GROWN
DIAMOND REPORT

COLOR GRADING SCALE	CL		NC		FT		VLT		LT	
	COLORLESS D-F		NEAR COLORLESS G-J		FAINT K-M		VERY LIGHT N-R		LIGHT S-Z	
CLARITY (10x) GRADING SCALE	FL IF		VVS		VS		SI		I	
	FLAWLESS INTERNALLY FLAWLESS		VERY VERY SLIGHTLY INCLUDED		VERY SLIGHTLY INCLUDED		SLIGHTLY INCLUDED		INCLUDED	

LASERSCRIBESM

LABORATORY GROWN DIAMOND REPORT

05/06/2021	
IGI Report Number	LG474117952
Shape and Cutting Style	CUT CORNERED RECTANGULAR MODIFIED BRILLIANT
Measurements	9.76 x 7.93 x 5.35 mm
GRADING RESULTS	
Carat Weight	3.53 CARATS
Color Grade	H
Clarity Grade	VS 1



Polish	EXCELLENT
Symmetry	EXCELLENT
Fluorescence	NONE
Inscription(s)	LABGROWN IGI LG474117952

Comments: This Laboratory Grown Diamond was created by Chemical Vapor Deposition (CVD) growth process and may include post-growth treatment
Type IIa

