



INTERNATIONAL GEMOLOGICAL INSTITUTE

LABORATORY GROWN DIAMOND REPORT

IGI LABORATORY GROWN DIAMOND IDENTIFICATION REPORT

04/27/2021
 IGI Report Number LG474116521
 Shape and Cutting Style ROUND BRILLIANT
 Measurements 4.21 - 4.22 X 2.64 MM

GRADING RESULTS

Carat Weight 0.30 CARAT
 Color Grade E
 Clarity Grade VS 1
 Cut Grade VERY GOOD

ADDITIONAL GRADING INFORMATION

Polish VERY GOOD
 Symmetry EXCELLENT
 Fluorescence NONE
 Inscription(s) LABGROWN IGI LG474116521

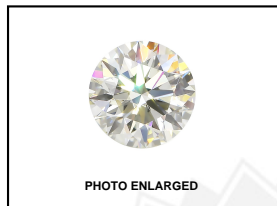
Comments: As Grown - No indication of post-growth treatment.
 This Laboratory Grown Diamond was created by High Pressure High Temperature (HPHT) growth process.
 Type II

This Laboratory Grown Diamond (LGD) described in this Report has been analyzed, graded and Laserscribed® by International Gemological Institute (IGI). A LGD has essentially the chemical, physical and optical properties as a mined diamond, with the exception of being man-made (a manufactured product). LGD's are typically produced by CVD (chemical vapor deposition) or by HPHT (high pressure high temperature) growth processes and may include post growth modifications to change the color. IGI utilizes the most advanced techniques and equipment currently available including, binocular microscopes, diamond color masters, non-contact-optical measuring device, a wide range analytical techniques including FTIR, UV-VIS-NIR, raman spectroscopy, and fluorescence analysis at various excitation wavelengths. This Report includes advanced security features. This Report is neither a guarantee, valuation nor appraisal and by making the report IGI does not agree to purchase or replace the article.

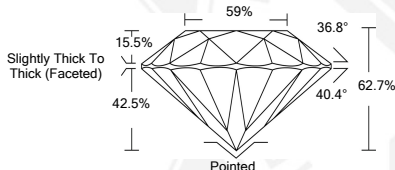
INTERNATIONAL GEMOLOGICAL INSTITUTE, INC

ELECTRONIC COPY LABORATORY GROWN DIAMOND REPORT

LG474116521



LASERSCRIBE SM



IGI LABORATORY GROWN DIAMOND ID REPORT

04/27/2021
 IGI Report Number LG474116521
ROUND BRILLIANT
4.21 - 4.22 X 2.64 MM
 Carat Weight 0.30 CARAT
 Color Grade E
 Clarity Grade VS 1
 Cut Grade VERY GOOD
 Polish VERY GOOD
 Symmetry EXCELLENT
 Fluorescence NONE
 Inscription(s) LABGROWN IGI
 LG474116521

Comments: As Grown - No indication of post-growth treatment.
 This Laboratory Grown Diamond was created by High Pressure High Temperature (HPHT) growth process.
 Type II

IGI LABORATORY GROWN DIAMOND ID REPORT

04/27/2021
 IGI Report Number LG474116521
ROUND BRILLIANT
4.21 - 4.22 X 2.64 MM
 Carat Weight 0.30 CARAT
 Color Grade E
 Clarity Grade VS 1
 Cut Grade VERY GOOD
 Polish VERY GOOD
 Symmetry EXCELLENT
 Fluorescence NONE
 Inscription(s) LABGROWN IGI
 LG474116521

Comments: As Grown - No indication of post-growth treatment.
 This Laboratory Grown Diamond was created by High Pressure High Temperature (HPHT) growth process.
 Type II

THIS DOCUMENT WAS PRODUCED WITH THE FOLLOWING SECURITY MEASURES: SPECIAL DOCUMENT PAPER, INK SCREENS, WATERMARK, BACKGROUND DESIGN, HOLOGRAM AND OTHER SECURITY FEATURES NOT LISTED AND DO EXCEED DOCUMENT SECURITY INDUSTRY GUIDELINES.

For Terms & Conditions and to verify this report, please visit www.igi.org