

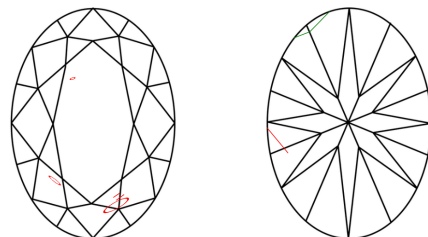


## PROPORTIONS

Diagram illustrating the cross-section of a diamond-shaped structure, showing dimensions and labels:

- Top width: 58.5%
- Left side label: Slightly Thick To Thick (Faceted)
- Left side dimension (top): 15%
- Left side dimension (bottom): 41.5%
- Right side dimension: 61.8%
- Bottom label: Pointed

## CLARITY CHARACTERISTICS



## KEY TO SYMBOLS

Red symbols indicate internal characteristics.  
Green symbols indicate external characteristics.

**ELECTRONIC COPY**

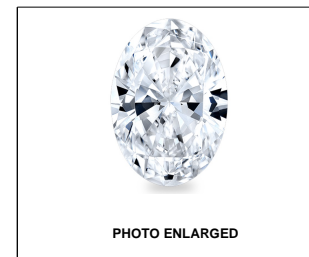
LABORATORY GROWN  
DIAMOND REPORT

## GRADING SCALES

COLOR GRADING SCALE	CL		NC		FT		VLT		LT	
	COLORLESS D-F		NEAR COLORLESS G-J		FAINT K-M		VERY LIGHT N-R		LIGHT S-Z	
CLARITY (10x) GRADING SCALE	FL	IF	VVS		VS		SI		I	
	FLAWLESS INTERNALLY FLAWLESS		VERY VERY SLIGHTLY INCLUDED		VERY SLIGHTLY INCLUDED		SLIGHTLY INCLUDED		INCLUDED	

The laboratory grown diamond described in this Report ("Report") has been graded, tested, analyzed, examined and/or inscribed by International Gemological Institute ("IGI"). A laboratory grown diamond is one that has essentially the same chemical, physical and optical properties as a natural diamond. IGI is a laboratory owned and operated by a company (a manufactured product). IGI employs and utilizes those techniques and equipment currently available to IGI, including, without limitation, 10X magnification, corrected triplet loupe, binocular microscope, master color comparison stones, non-contact optical spectrometer, diamond detector, and/or other instruments and/or processes as deemed appropriate by IGI. This Report includes advanced security features. A duly accredited gemologist or jeweler can advise you with respect to the importance of and interrelationship between cut, color, clarity and carat weight.

**THIS REPORT IS NEITHER A GUARANTEE, VALUATION, NOR APPRAISAL OF THE GEMSTONE DESCRIBED HEREIN. PLEASE REVIEW THE LIMITATIONS AND RESTRICTIONS SET FORTH ONLINE. FOR MORE INFORMATION, PLEASE VISIT [WWW.IGI.ORG](http://WWW.IGI.ORG) OR CALL 1-888-BUY-IGI.**



LABGROWN IGI LG472172670

LASERSCRIBE<sup>SM</sup>

## LABORATORY GROWN DIAMOND REPORT

04/21/2021

IGI Report Number **LG472172670**Shape and Cutting Style **OVAL BRILLIANT**

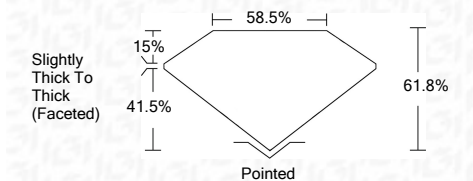
Measurements	7.63 x 5.73 x 3.54 mm
--------------	-----------------------

## GRADING RESULTS

Carat Weight **1.01 CARAT**

Color Grade **D**

Clarity Grade	SI 1
---------------	------



### ADDITIONAL GRADING INFORMATION

Polish **EXCELLENT**

Symmetry **VERY GOOD**

Fluorescence **NONE**

Inscription(s) **LABGROWN IGI LG472172670**

Comments: As Grown - No indication of post-growth treatment.  
This Laboratory Grown Diamond was created by High Pressure High Temperature (HPHT) growth process.  
Type II

Comments: As Grown - No indication of post-growth treatment.  
This Laboratory Grown Diamond was created by High Pressure High Temperature (HPHT) growth process.  
Type II



IGI

