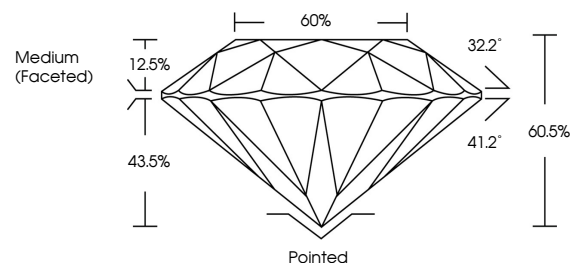




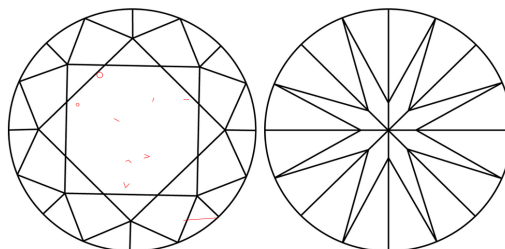
LABORATORY GROWN DIAMOND REPORT

LG462177040

PROPORTIONS

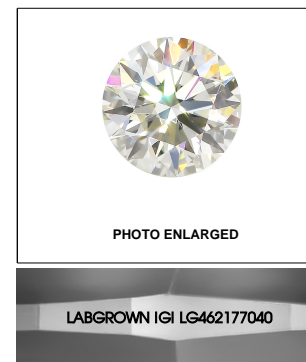


CLARITY CHARACTERISTICS



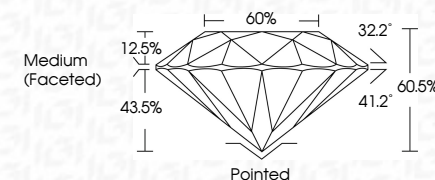
KEY TO SYMBOLS

Red symbols indicate internal characteristics.
Green symbols indicate external characteristics.



LASERSCRIBESM

02/18/2021	
IGI Report Number	LG462177040
Shape and Cutting Style	ROUND BRILLIANT
Measurements	7.60 - 7.65 x 4.61 mm
GRADING RESULTS	
Carat Weight	1.65 CARAT
Color Grade	H
Clarity Grade	SI 1
Cut Grade	EXCELLENT



ADDITIONAL GRADING INFORMATION

Polish	EXCELLENT
Symmetry	EXCELLENT
Fluorescence	NONE
Inscription(s)	LABGROWN IGI LG462177040

Comments: This Laboratory Grown Diamond was created by Chemical Vapor Deposition (CVD) growth process and may include post-growth treatment Type IIa

02/18/2021	
IGI Report Number	LG462177040
Shape and Cutting Style	ROUND BRILLIANT
Measurements	7.60 - 7.65 x 4.61 mm

GRADING RESULTS

Carat Weight	1.65 CARAT
Color Grade	H
Clarity Grade	SI 1
Cut Grade	EXCELLENT

ADDITIONAL GRADING INFORMATION

Polish	EXCELLENT
Symmetry	EXCELLENT
Fluorescence	NONE
Inscription(s)	LABGROWN IGI LG462177040

Comments: This Laboratory Grown Diamond was created by Chemical Vapor Deposition (CVD) growth process and may include post-growth treatment Type IIa



IGI

02/18/2021	
IGI Report No LG462177040	
ROUND BRILLIANT	
7.60 - 7.65 x 4.61 mm	1.65 CARAT
Color Grade	H
Clarity Grade	SI 1
Cut Grade	EXCELLENT
Depth	60.5%
Table	60%
Grade	Medium (Faceted)
Culet	Pointed
Polish	EXCELLENT
Symmetry	EXCELLENT
Fluorescence	NONE
Inscription(s)	LABGROWN IGI LG462177040
Comments: This Laboratory Grown Diamond was created by Chemical Vapor Deposition (CVD) growth process and may include post-growth treatment Type IIa	