



LABORATORY GROWN DIAMOND REPORT

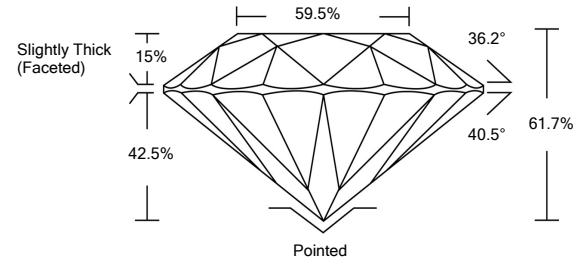
LG462167681

GRADING SCALES

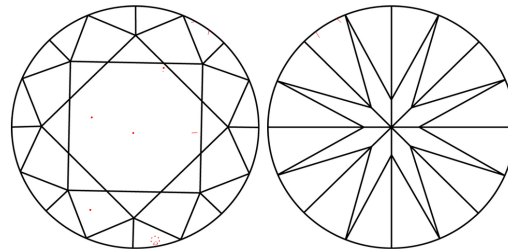
Table with 5 columns for Color Grading Scale (CL, NC, FT, VLT, LT) and Clarity (10x) Grading Scale (FL, IF, VVS, VS, SI, I).

The laboratory grown diamond described in this Report (Report) has been graded, tested, analyzed, examined and/or inscribed by International Gemological Institute (IGI). A laboratory grown diamond is one that has essentially the same chemical, physical and optical properties as a mined diamond...

PROPORTIONS

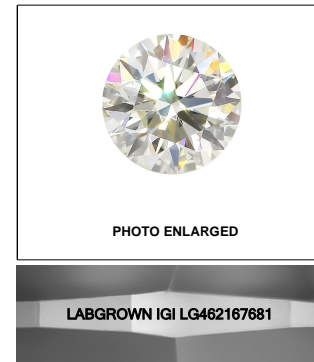


CLARITY CHARACTERISTICS



KEY TO SYMBOLS

Red symbols indicate internal characteristics. Green symbols indicate external characteristics.



LASERSCRIBESM

02/16/2021

IGI Report Number LG462167681

Shape and Cutting Style ROUND BRILLIANT

Measurements 9.15 - 9.19 x 5.66 mm

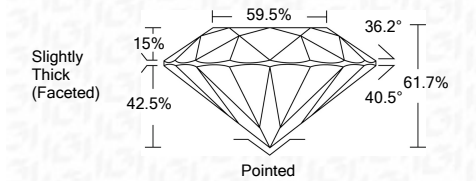
GRADING RESULTS

Carat Weight 3.01 CARATS

Color Grade J

Clarity Grade VS 1

Cut Grade EXCELLENT



ADDITIONAL GRADING INFORMATION

Polish EXCELLENT

Symmetry EXCELLENT

Fluorescence NONE

Inscription(s) LABGROWN IGI LG462167681

Comments: This Laboratory Grown Diamond was created by Chemical Vapor Deposition (CVD) growth process and may include post-growth treatment. Type IIa



IGI

Summary table of diamond details: IGI Report No. LG462167681, ROUND BRILLIANT, 9.15 - 9.19 x 5.66 mm, 3.01 CARATS, Color Grade J, Clarity Grade VS 1, Cut Grade EXCELLENT, Depth 61.7%, Table 59.5%, Girdle Slightly Thick (Faceted), Culet Pointed, Polish EXCELLENT, Symmetry EXCELLENT, Fluorescence NONE, Inscription(s) LABGROWN IGI LG462167681.

02/16/2021

IGI Report No. LG462167681

ROUND BRILLIANT

9.15 - 9.19 x 5.66 mm

3.01 CARATS

Color Grade J

Clarity Grade VS 1

Cut Grade EXCELLENT

Depth 61.7%

Table 59.5%

Girdle Slightly Thick (Faceted)

Culet Pointed

Polish EXCELLENT

Symmetry EXCELLENT

Fluorescence NONE

Inscription(s) LABGROWN IGI LG462167681

Comments: This Laboratory Grown Diamond was created by Chemical Vapor Deposition (CVD) growth process and may include post-growth treatment. Type IIa

