



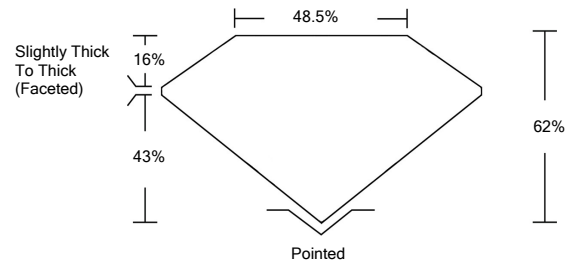
LG459194870

LABORATORY GROWN DIAMOND REPORT

| | |
|---------------------------------------|--------------------------|
| 01/20/2021 | |
| IGI Report Number | LG459194870 |
| Shape and Cutting Style | HEART BRILLIANT |
| Measurements | 11.71 x 11.92 x 7.39 mm |
| GRADING RESULTS | |
| Carat Weight | 6.01 CARATS |
| Color Grade | D |
| Clarity Grade | VVS 1 |
| ADDITIONAL GRADING INFORMATION | |
| Polish | EXCELLENT |
| Symmetry | EXCELLENT |
| Fluorescence | NONE |
| Inscription(s) | LABGROWN IGI LG459194870 |

Comments: As Grown - No indication of post-growth treatment. This Laboratory Grown Diamond was created by High Pressure High Temperature (HPHT) growth process. Type II

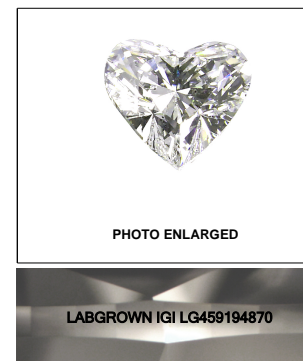
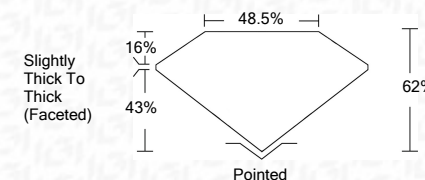
PROPORTIONS



GRADING SCALES

| | | | | | | |
|-----------------------------|------------------------------|-----------------------------|------------------------|-------------------|-----------|---|
| COLOR GRADING SCALE | CL | NC | FT | VL | LT | |
| | COLORLESS D-F | NEAR COLORLESS G-J | FAINT K-M | VERY LIGHT N-R | LIGHT S-Z | |
| CLARITY (10x) GRADING SCALE | FL | IF | VVS | VS | SI | I |
| | FLAWLESS INTERNALLY FLAWLESS | VERY VERY SLIGHTLY INCLUDED | VERY SLIGHTLY INCLUDED | SLIGHTLY INCLUDED | INCLUDED | |

| | |
|-------------------------|-------------------------|
| 01/20/2021 | |
| IGI Report Number | LG459194870 |
| Shape and Cutting Style | HEART BRILLIANT |
| Measurements | 11.71 x 11.92 x 7.39 mm |
| GRADING RESULTS | |
| Carat Weight | 6.01 CARATS |
| Color Grade | D |
| Clarity Grade | VVS 1 |



LASERSCRIBESM

| | |
|---------------------------------------|--------------------------|
| ADDITIONAL GRADING INFORMATION | |
| Polish | EXCELLENT |
| Symmetry | EXCELLENT |
| Fluorescence | NONE |
| Inscription(s) | LABGROWN IGI LG459194870 |

Comments: As Grown - No indication of post-growth treatment. This Laboratory Grown Diamond was created by High Pressure High Temperature (HPHT) growth process. Type II

The laboratory grown diamond described in this Report (Report) has been graded, tested, analyzed, examined and/or inscribed by International Gemological Institute (I.G.I.). A laboratory grown diamond is one that has essentially the same chemical, physical and optical properties as a mined diamond, with the exception of being grown by man (a manufactured product). I.G.I. employs and utilizes those techniques and equipment currently available to I.G.I., including, without limitation, 10X magnification, corrected triplet loupe, binocular microscope, master color comparison stones, non-contact optical measuring device, Diamond Sure™, Diamond View™, Spectrophotometer and such other instruments and/or processes as deemed appropriate by I.G.I. This Report includes advanced security features. A duly accredited gemologist or jeweler can advise you with respect to the importance of and interrelationship between cut, color, clarity and carat weight. THIS REPORT IS NEITHER A GUARANTEE, VALUATION, NOR APPRAISAL OF THE GEMSTONE DESCRIBED HEREIN. PLEASE REVIEW THE LIMITATIONS AND RESTRICTIONS SET FORTH ONLINE. FOR ADDITIONAL INFORMATION, IMPORTANT LIMITATIONS AND DISCLAIMERS, PLEASE GO TO WWW.IGI.ORG OR CALL 1-888-BUY-IGI.

© INTERNATIONAL GEMOLOGICAL INSTITUTE, INC.



| | |
|----------------------------|---------------------------------------------------------------------------------------------------------------------------------------------------------------|
| 01/20/2021 | |
| IGI Report No. LG459194870 | |
| HEART BRILLIANT | |
| 11.71 x 11.92 x 7.39 mm | |
| Carat Weight | 6.01 CARATS |
| Color Grade | D |
| Clarity Grade | VVS 1 |
| Depth | 62% |
| Table | 48.5% |
| Girdle | Slightly Thick To Thick (Faceted) |
| Culet | Pointed |
| Polish | EXCELLENT |
| Symmetry | EXCELLENT |
| Fluorescence | NONE |
| Inscription(s) | LABGROWN IGI LG459194870 |
| Comments: | As Grown - No indication of post-growth treatment. This Laboratory Grown Diamond was created by High Pressure High Temperature (HPHT) growth process. Type II |