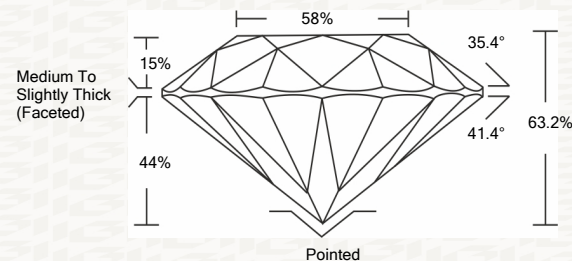




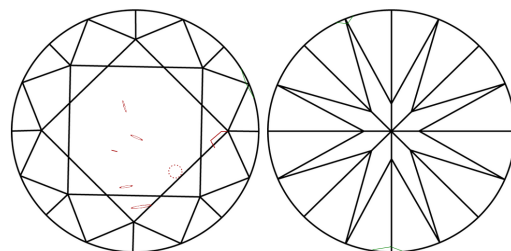
IGI GEMOLOGICAL REPORT

ADDITIONAL INFORMATION

PROPORTIONS



CLARITY CHARACTERISTICS



KEY TO SYMBOLS

Red symbols indicate internal characteristics. Green symbols indicate external characteristics.

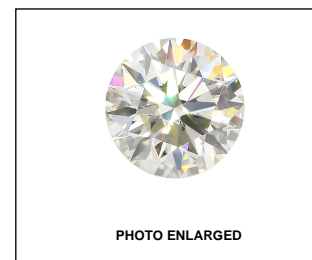
This Report is subject to the terms and conditions

© IGI 2000, edition 2019 all rights reserved.

GRADING SCALES

Table with 2 rows and 5 columns showing grading scales for Color and Clarity.

The laboratory grown diamond described in this Report (Report) has been graded, tested, analyzed, examined and/or inscribed by International Gemological Institute (I.G.I.).



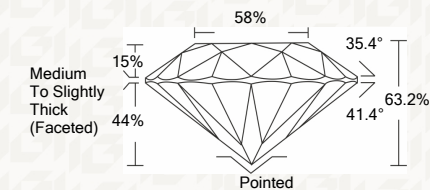
LASERSCRIBE SM



THE DOCUMENT WAS PRODUCED THE FOLLOWING SECURITY MEASURES: SPECIAL DOCUMENT PAPER, INK SCREENS, WATERMARK, BACKGROUND DESIGNS HOLOGRAM AND OTHER SECURITY FEATURES NOT LISTED AND DO EXCEED DOCUMENT SECURITY INDUSTRY DUPLINES

IGI LABORATORY GROWN DIAMOND GRADING REPORT

02/01/2021 IGI Report Number LG459130939 Shape and Cutting Style ROUND BRILLIANT Measurements 7.96 - 8.02 X 5.06 MM GRADING RESULTS Carat Weight 2.01 CARATS Color Grade E Clarity Grade SI 1 Cut Grade EXCELLENT



ADDITIONAL GRADING INFORMATION

Polish EXCELLENT Symmetry EXCELLENT Fluorescence NONE Inscription(s) LABGROWN IGI LG459130939

Comments: As Grown - No indication of post-growth treatment. This Laboratory Grown Diamond was created by High Pressure High Temperature (HPHT) growth process. Type II



IGI

02/01/2021 IGI Report No. LG459130939 ROUND BRILLIANT 7.96 - 8.02 X 5.06 MM Carat Weight 2.01 CARATS Color Grade E Clarity Grade SI 1 Cut Grade EXCELLENT Depth 63.2% Table 58% Girdle Medium To Slightly Thick (Faceted) Polished EXCELLENT Culet NONE Symmetry EXCELLENT Fluorescence NONE Inscription(s) LABGROWN IGI LG459130939

Comments: As Grown - No indication of post-growth treatment. This Laboratory Grown Diamond was created by High Pressure High Temperature (HPHT) growth process. Type II

