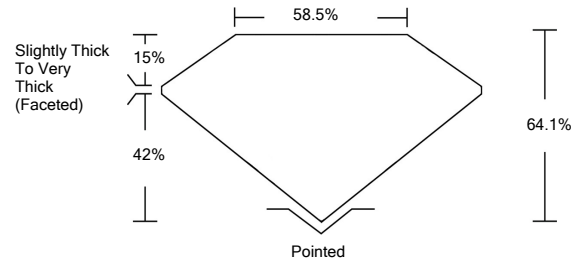




LG459122821

LABORATORY GROWN DIAMOND REPORT

PROPORTIONS



GRADING SCALES

Table with 5 columns for Color Grading Scale (CL, NC, FT, VLT, LT) and Clarity (10x) Grading Scale (FL, IF, VVS, VS, SI, I).

The laboratory grown diamond described in this Report (Report) has been graded, tested, analyzed, examined and/or inscribed by International Gemological Institute (IGI). A laboratory grown diamond is one that has essentially the same chemical, physical and optical properties as a mined diamond...

© INTERNATIONAL GEMOLOGICAL INSTITUTE, INC.

01/30/2021

IGI Report Number LG459122821

Shape and Cutting Style OVAL BRILLIANT

Measurements 7.51 x 5.48 x 3.51 mm

GRADING RESULTS

Carat Weight 0.96 CARAT

Color Grade D

Clarity Grade VVS 2

01/30/2021

IGI Report Number LG459122821

Shape and Cutting Style OVAL BRILLIANT

Measurements 7.51 x 5.48 x 3.51 mm

GRADING RESULTS

Carat Weight 0.96 CARAT

Color Grade D

Clarity Grade VVS 2

ADDITIONAL GRADING INFORMATION

Polish EXCELLENT

Symmetry EXCELLENT

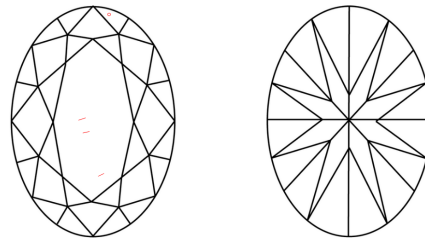
Fluorescence NONE

Inscription(s) LABGROWN IGI LG459122821

Comments: As Grown - No indication of post-growth treatment.

This Laboratory Grown Diamond was created by High Pressure High Temperature (HPHT) growth process. Type II

CLARITY CHARACTERISTICS



KEY TO SYMBOLS

Red symbols indicate internal characteristics. Green symbols indicate external characteristics.

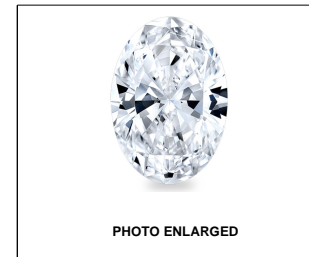
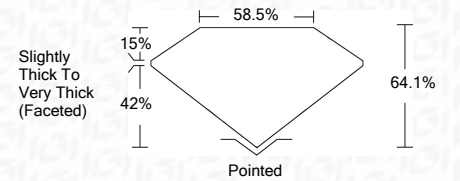


PHOTO ENLARGED



LASERSCRIBESM



ADDITIONAL GRADING INFORMATION

Polish EXCELLENT

Symmetry EXCELLENT

Fluorescence NONE

Inscription(s) LABGROWN IGI LG459122821

Comments: As Grown - No indication of post-growth treatment.

This Laboratory Grown Diamond was created by High Pressure High Temperature (HPHT) growth process. Type II



IGI

Summary table of report details: IGI Report No. LG459122821, OVAL BRILLIANT, 7.51 x 5.48 x 3.51 mm, 0.96 CARAT, VVS 2, D, EXCELLENT, EXCELLENT, NONE, LABGROWN IGI LG459122821.