



IGI GEMOLOGICAL REPORT

IGI LABORATORY GROWN DIAMOND GRADING REPORT

12/11/2020

IGI Report Number LG451058251

Shape and Cutting Style OVAL BRILLIANT

Measurements 9.57 X 6.74 X 4.20 MM

GRADING RESULTS

Carat Weight 1.70 CARAT

Color Grade J

Clarity Grade SI 2

ADDITIONAL GRADING INFORMATION

Polish EXCELLENT

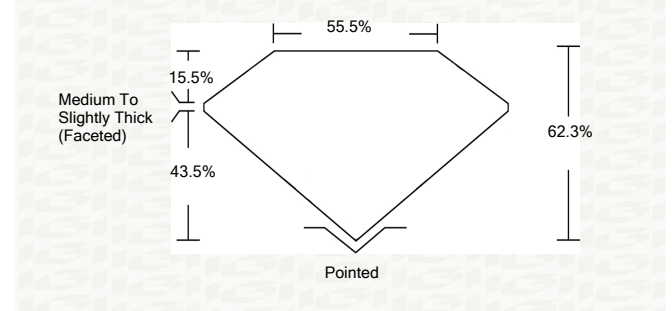
Symmetry EXCELLENT

Fluorescence NONE

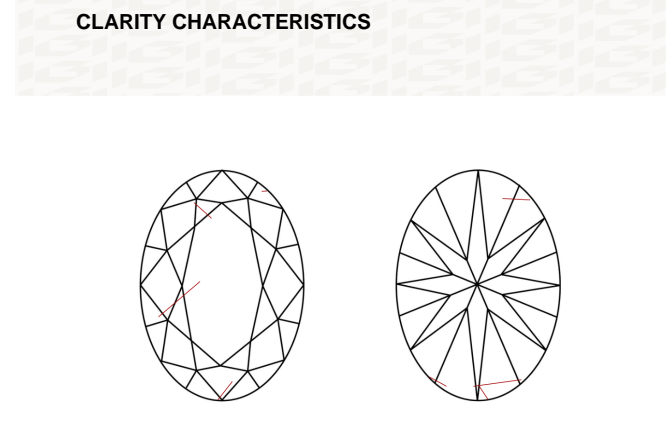
Inscription(s) LABGROWN IGI LG451058251

ADDITIONAL INFORMATION

PROPORTIONS



CLARITY CHARACTERISTICS

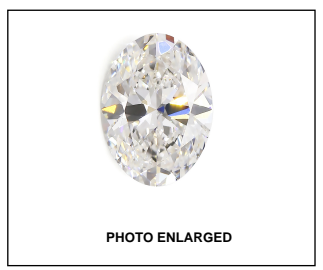


KEY TO SYMBOLS
Red symbols indicate internal characteristics.
Green symbols indicate external characteristics.

GRADING SCALES

Table with 5 columns: CL (Colorless D-F), NC (Near Colorless G-J), FT (Faint K-M), VLT (Very Light N-R), LT (Light S-Z). Second row: FL (Flawless Internally Flawless), IF (Internally Flawless), VVS (Very Very Slightly Included), VS (Very Slightly Included), SI (Slightly Included), I (Included).

The laboratory grown diamond described in this Report (Report) has been graded, tested, analyzed, examined and/or inscribed by International Gemological Institute (IGI). A laboratory grown diamond is one that has essentially the same chemical, physical and optical properties as a mined diamond, with the exception of being grown by man (a manufactured product). IGI employs and utilizes those techniques and equipment currently available to IGI, including, without limitation, 10X magnification, corrected triplet loupe, binocular microscope, master color comparison stones, non-contact-optical measuring device, Diamond Sure™, Diamond View™, Spectrophotometer and such other instruments and/or processes as deemed appropriate by IGI. This Report includes advanced security features. A duly accredited gemologist or jeweler can advise you with respect to the importance of and interrelationship between cut, color, clarity and carat weight. THIS REPORT IS NEITHER A GUARANTEE, VALUATION, NOR APPRAISAL OF THE GEMSTONE DESCRIBED HEREIN. PLEASE REVIEW THE LIMITATIONS AND RESTRICTIONS SET FORTH ONLINE. FOR ADDITIONAL INFORMATION, IMPORTANT LIMITATIONS AND DISCLAIMERS, PLEASE GO TO WWW.IGI.ORG OR CALL 1-888-BUY-IGI.



IGI LABORATORY GROWN DIAMOND GRADING REPORT

12/11/2020

IGI Report Number LG451058251

Shape and Cutting Style OVAL BRILLIANT

Measurements 9.57 X 6.74 X 4.20 MM

GRADING RESULTS

Carat Weight 1.70 CARAT

Color Grade J

Clarity Grade SI 2

ADDITIONAL GRADING INFORMATION

Polish EXCELLENT

Symmetry EXCELLENT

Fluorescence NONE

Inscription(s) LABGROWN IGI LG451058251

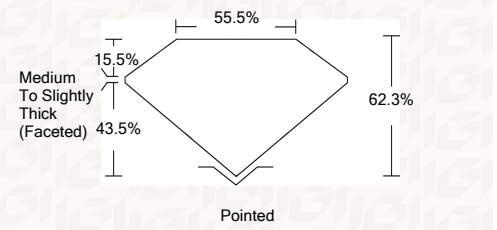
ADDITIONAL GRADING INFORMATION

Polish EXCELLENT

Symmetry EXCELLENT

Fluorescence NONE

Inscription(s) LABGROWN IGI LG451058251



IGI

This Report is subject to the terms and conditions

© IGI 2000, edition 2019 all rights reserved.

THE DOCUMENT WAS PRODUCED THE FOLLOWING SECURITY MEASURES: SPECIAL DOCUMENT PAPER, INK SCREENS, WATERMARK, BACKGROUND DESIGNS, HOLOGRAM AND OTHER SECURITY FEATURES NOT LISTED AND DO EXCEED DOCUMENT SECURITY INDUSTRY DUDLINES

12/11/2020
IGI Report No LG451058251
OVAL BRILLIANT
9.57 X 6.74 X 4.20 MM
Carat Weight 1.70 CARAT
Color Grade J
Clarity Grade SI 2
Depth 62.3%
Table 15.5%
Girdle Medium To Slightly Thick (Faceted)
Culet Pointed
Polish EXCELLENT
Symmetry EXCELLENT
Fluorescence NONE
Inscription(s) LABGROWN IGI LG451058251