



**INTERNATIONAL  
GEMOLOGICAL  
INSTITUTE**

**ELECTRONIC COPY**

LABORATORY GROWN DIAMOND REPORT

**LG451057758**

**EDUCATIONAL AND GRADING  
FOR THE IDENTIFICATION AND GRADING  
OF DIAMONDS AND COLORED STONES**

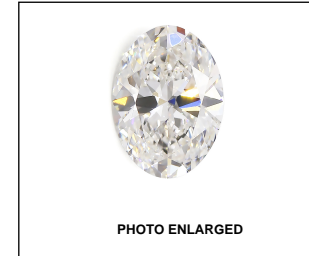
**GRADING SCALES**

|                             |                              |                             |                        |                   |           |   |
|-----------------------------|------------------------------|-----------------------------|------------------------|-------------------|-----------|---|
| COLOR GRADING SCALE         | CL                           | NC                          | FT                     | VL                | LT        |   |
|                             | COLORLESS D-F                | NEAR COLORLESS G-J          | FAINT K-M              | VERY LIGHT N-R    | LIGHT S-Z |   |
| CLARITY (10X) GRADING SCALE | FL                           | IF                          | VVS                    | VS                | SI        | I |
|                             | FLAWLESS INTERNALLY FLAWLESS | VERY VERY SLIGHTLY INCLUDED | VERY SLIGHTLY INCLUDED | SLIGHTLY INCLUDED | INCLUDED  |   |

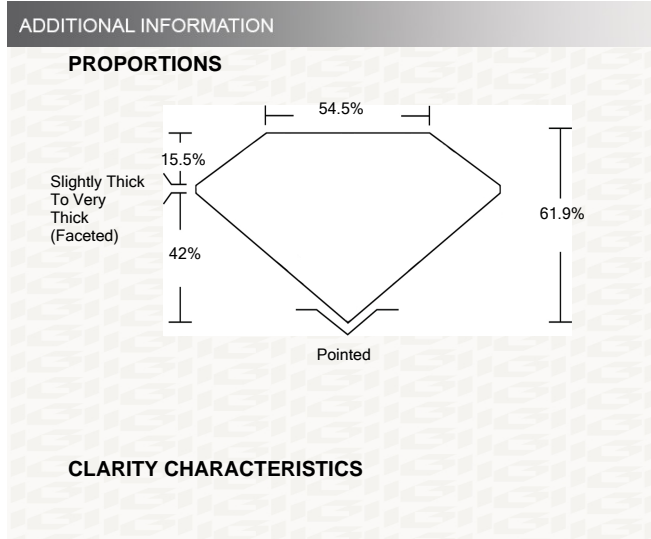
The laboratory grown diamond described in this Report (Report) has been graded, tested, analyzed, examined and/or inscribed by International Gemological Institute (IGI). A laboratory grown diamond is one that has essentially the same chemical, physical and optical properties as a mined diamond, with the exception of being grown by man (a manufactured product). IGI employs and utilizes those techniques and equipment currently available to IGI, including, without limitation, 10X magnification, corrected triplet loupe, binocular microscope, master color comparison stones, non-contact-optical measuring device, Diamond Sure™, Diamond View™, Spectrophotometer and such other instruments and/or processes as deemed appropriate by IGI. This Report includes advanced security features. A duly accredited gemologist or jeweler can advise you with respect to the importance of and interrelationship between cut, color, clarity and carat weight.

**THIS REPORT IS NEITHER A GUARANTEE, VALUATION, NOR APPRAISAL OF THE GEMSTONE DESCRIBED HEREIN. PLEASE REVIEW THE LIMITATIONS AND RESTRICTIONS SET FORTH ONLINE. FOR ADDITIONAL INFORMATION, IMPORTANT LIMITATIONS AND DISCLAIMERS, PLEASE GO TO WWW.IGI.ORG OR CALL 1-888-BUY-IGI.**

© INTERNATIONAL GEMOLOGICAL INSTITUTE, INC.



**LASERSCRIBE<sup>SM</sup>**



**KEY TO SYMBOLS**

Red symbols indicate internal characteristics.  
Green symbols indicate external characteristics.

This Report is subject to the terms and conditions

© IGI 2000, edition 2019 all rights reserved.

**IGI LABORATORY GROWN DIAMOND GRADING REPORT**  
12/18/2020

IGI Report Number **LG451057758**

Shape and Cutting Style **OVAL BRILLIANT**

Measurements **10.41 X 7.79 X 4.82 MM**

**GRADING RESULTS**

Carat Weight **2.51 CARATS**

Color Grade **J**

Clarity Grade **SI 1**

**ADDITIONAL GRADING INFORMATION**

Polish **EXCELLENT**

Symmetry **EXCELLENT**

Fluorescence **NONE**

Inscription(s) **LABGROWN IGI LG451057758**



**IGI**

|            |                           |                |                        |                          |               |                    |             |             |            |  |                  |                    |                   |   |
|------------|---------------------------|----------------|------------------------|--------------------------|---------------|--------------------|-------------|-------------|------------|--|------------------|--------------------|-------------------|---|
| 12/18/2020 | IGI Report No LG451057758 | OVAL BRILLIANT | 10.41 X 7.79 X 4.82 MM | Carat Weight 2.51 CARATS | Color Grade J | Clarity Grade SI 1 | Depth 61.9% | Table 15.5% | Grille 42% | Culet Slightly Thick To Very Thick (Faceted) | Polish EXCELLENT | Symmetry EXCELLENT | Fluorescence NONE | Inscription(s) LABGROWN IGI LG451057758 |
|------------|---------------------------|----------------|------------------------|--------------------------|---------------|--------------------|-------------|-------------|------------|--|------------------|--------------------|-------------------|---|

**IGI GEMOLOGICAL REPORT**

**IGI LABORATORY GROWN DIAMOND GRADING REPORT**

12/18/2020

IGI Report Number **LG451057758**

Shape and Cutting Style **OVAL BRILLIANT**

Measurements **10.41 X 7.79 X 4.82 MM**

**GRADING RESULTS**

Carat Weight **2.51 CARATS**

Color Grade **J**

Clarity Grade **SI 1**

**ADDITIONAL GRADING INFORMATION**

Polish **EXCELLENT**

Symmetry **EXCELLENT**

Fluorescence **NONE**

Inscription(s) **LABGROWN IGI LG451057758**

