



**INTERNATIONAL  
GEMOLOGICAL  
INSTITUTE**

**ELECTRONIC COPY**

**LG451057305**

LABORATORY GROWN DIAMOND REPORT

**EDUCATIONAL AND GRADING  
FOR THE IDENTIFICATION AND GRADING  
OF DIAMONDS AND COLORED STONES**

IGI GEMOLOGICAL REPORT

**IGI LABORATORY GROWN DIAMOND GRADING REPORT**

12/18/2020  
IGI Report Number **LG451057305**

Shape and Cutting Style **EMERALD CUT**

Measurements **8.51 X 6.32 X 3.94 MM**

**GRADING RESULTS**

Carat Weight **2.08 CARATS**

Color Grade **K**

Clarity Grade **VS 2**

**ADDITIONAL GRADING INFORMATION**

Polish **EXCELLENT**

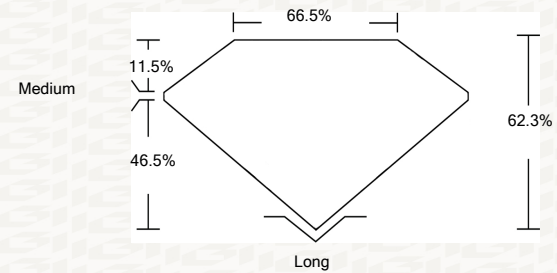
Symmetry **VERY GOOD**

Fluorescence **NONE**

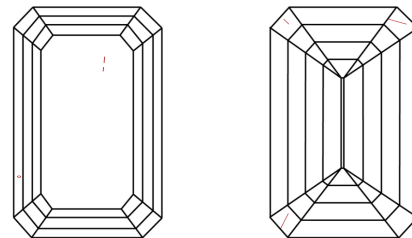
Inscription(s) **LABGROWN IGI LG451057305**

**ADDITIONAL INFORMATION**

**PROPORTIONS**



**CLARITY CHARACTERISTICS**



**KEY TO SYMBOLS**

Red symbols indicate internal characteristics.  
Green symbols indicate external characteristics.

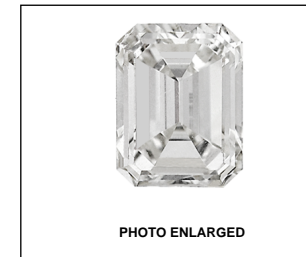
**GRADING SCALES**

|                             |               |                     |                             |                        |                   |          |
|-----------------------------|---------------|---------------------|-----------------------------|------------------------|-------------------|----------|
| COLOR GRADING SCALE         | CL            | NC                  | FT                          | VL                     | LT                |          |
|                             | COLORLESS D-F | NEAR COLORLESS G-J  | FAINT K-M                   | VERY LIGHT N-R         | LIGHT S-Z         |          |
| CLARITY (10X) GRADING SCALE | FL            | IF                  | VVS                         | VS                     | SI                | I        |
|                             | FLAWLESS      | INTERNALLY FLAWLESS | VERY VERY SLIGHTLY INCLUDED | VERY SLIGHTLY INCLUDED | SLIGHTLY INCLUDED | INCLUDED |

The laboratory grown diamond described in this Report (Report) has been graded, tested, analyzed, examined and/or inscribed by International Gemological Institute (IGI). A laboratory grown diamond is one that has essentially the same chemical, physical and optical properties as a mined diamond, with the exception of being grown by man (a manufactured product). IGI employs and utilizes those techniques and equipment currently available to IGI, including, without limitation, 10X magnification, corrected triplet loupe, binocular microscope, master color comparison stones, non-contact-optical measuring device, Diamond Sure™, Diamond View™, Spectrophotometer and such other instruments and/or processes as deemed appropriate by IGI. This Report includes advanced security features. A duly accredited gemologist or jeweler can advise you with respect to the importance of and interrelationship between cut, color, clarity and carat weight.

**THIS REPORT IS NEITHER A GUARANTEE, VALUATION, NOR APPRAISAL OF THE GEMSTONE DESCRIBED HEREIN. PLEASE REVIEW THE LIMITATIONS AND RESTRICTIONS SET FORTH ONLINE. FOR ADDITIONAL INFORMATION, IMPORTANT LIMITATIONS AND DISCLAIMERS, PLEASE GO TO WWW.IGI.ORG OR CALL 1-888-BUY-IGI.**

© INTERNATIONAL GEMOLOGICAL INSTITUTE, INC.



LABGROWN IGI LG451057305

LASERSCRIBE SM

**IGI LABORATORY GROWN DIAMOND GRADING REPORT**

12/18/2020  
IGI Report Number **LG451057305**

Shape and Cutting Style **EMERALD CUT**

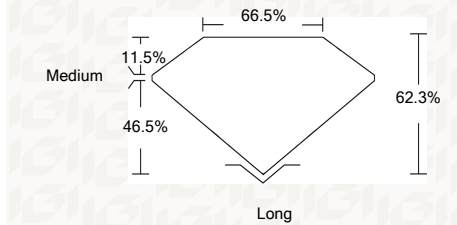
Measurements **8.51 X 6.32 X 3.94 MM**

**GRADING RESULTS**

Carat Weight **2.08 CARATS**

Color Grade **K**

Clarity Grade **VS 2**



**ADDITIONAL GRADING INFORMATION**

Polish **EXCELLENT**

Symmetry **VERY GOOD**

Fluorescence **NONE**

Inscription(s) **LABGROWN IGI LG451057305**



**IGI**

This Report is subject to the terms and conditions

© IGI 2000, edition 2019 all rights reserved.

THE DOCUMENT WAS PRODUCED THE FOLLOWING SECURITY MEASURES: SPECIAL DOCUMENT PAPER, INK SCREENS, WATERMARK, BACKGROUND DESIGNS, HOLOGRAM AND OTHER SECURITY FEATURES NOT LISTED AND DO EXCEED DOCUMENT SECURITY INDUSTRY DUDLINES

12/18/2020  
IGI Report No LG451057305  
EMERALD CUT  
8.51 X 6.32 X 3.94 MM  
Carat Weight 2.08 CARATS  
Color Grade K  
Clarity Grade VS 2  
Depth 62.3%  
Table 66.5%  
Girdle Medium  
Culet Long  
Polish EXCELLENT  
Symmetry VERY GOOD  
Fluorescence NONE  
Inscription(s) LABGROWN IGI LG451057305