



**INTERNATIONAL  
GEMOLOGICAL  
INSTITUTE**

**ELECTRONIC COPY**

**LABORATORY GROWN DIAMOND REPORT**

**LG451057148**

**IGI LABORATORY GROWN  
DIAMOND ID REPORT**

12/18/2020

IGI Report Number **LG451057148**

**OVAL BRILLIANT**

**7.80 x 5.40 x 3.42 MM**

Carat Weight 0.93 CARAT  
Color Grade I  
Clarity Grade VS 1  
Polish VERY GOOD  
Symmetry VERY GOOD  
Fluorescence NONE  
Inscription(s) LABGROWN IGI  
LG451057148

**IGI GEMOLOGICAL REPORT**

**IGI LABORATORY GROWN DIAMOND IDENTIFICATION REPORT**

12/18/2020  
IGI Report Number LG451057148  
Shape and Cutting Style OVAL BRILLIANT  
Measurements 7.80 x 5.40 x 3.42 MM

**GRADING RESULTS**

Carat Weight 0.93 CARAT  
Color Grade I  
Clarity Grade VS 1

**ADDITIONAL GRADING INFORMATION**

Polish VERY GOOD  
Symmetry VERY GOOD  
Fluorescence NONE  
Inscription(s) LABGROWN IGI LG451057148



This Laboratory Grown Diamond (LGD) described in this Report has been analyzed, graded and Laserscribed® by International Gemological Institute (IGI). A LGD has essentially the chemical, physical and optical properties as a mined diamond, with the exception of being man-made (a manufactured product). LGD's are typically produced by CVD (chemical vapor deposition) or by HPHT (high pressure high temperature) growth processes and may include post growth modifications to change the color. IGI utilizes the most advanced techniques and equipment currently available including, binocular microscopes, diamond color masters, non-contact-optical measuring device, a wide range analytical techniques including FTIR, UV-VIS-NIR, raman spectroscopy, and fluorescence analysis at various excitation wavelengths. This Report includes advanced security features. This Report is neither a guarantee, valuation nor appraisal and by making the report IGI does not agree to purchase or replace the article.

**INTERNATIONAL GEMOLOGICAL INSTITUTE, INC**

**ADDITIONAL INFORMATION**

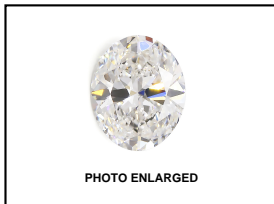
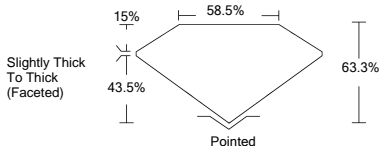


PHOTO ENLARGED



LABGROWN IGI LG451057148

**LASERSCRIBE SM**



**IGI LABORATORY GROWN  
DIAMOND ID REPORT**

12/18/2020

IGI Report Number **LG451057148**

**OVAL BRILLIANT**

**7.80 x 5.40 x 3.42 MM**

Carat Weight 0.93 CARAT  
Color Grade I  
Clarity Grade VS 1  
Polish VERY GOOD  
Symmetry VERY GOOD  
Fluorescence NONE  
Inscription(s) LABGROWN IGI  
LG451057148

For Terms & Conditions, please visit [www.igi.org](http://www.igi.org)



THE DOCUMENT WAS PRODUCED THE FOLLOWING SECURITY MEASURES: SPECIAL DOCUMENT PAPER, INK SCREENS, WATERMARK, BACKGROUND DESIGNS, HOLOGRAM AND OTHER SECURITY FEATURES NOT LISTED AND DO EXCEED DOCUMENT SECURITY INDUSTRY DUDLINES