



IGI GEMOLOGICAL REPORT

IGI LABORATORY GROWN DIAMOND GRADING REPORT

11/26/2020

IGI Report Number LG451056952

Shape and Cutting Style OVAL BRILLIANT

Measurements 8.76 X 6.54 X 4.16 MM

GRADING RESULTS

Carat Weight 1.52 CARAT

Color Grade K

Clarity Grade SI 1

ADDITIONAL GRADING INFORMATION

Polish EXCELLENT

Symmetry EXCELLENT

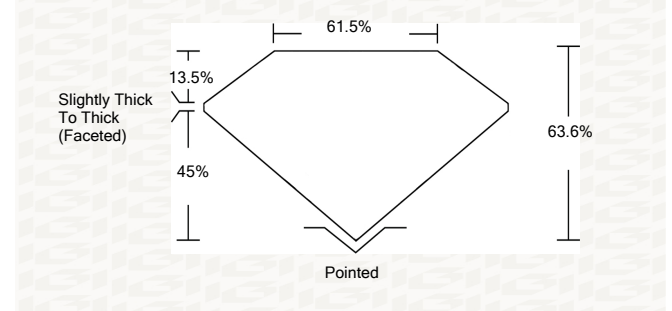
Fluorescence NONE

Inscription(s) LABGROWN IGI LG451056952

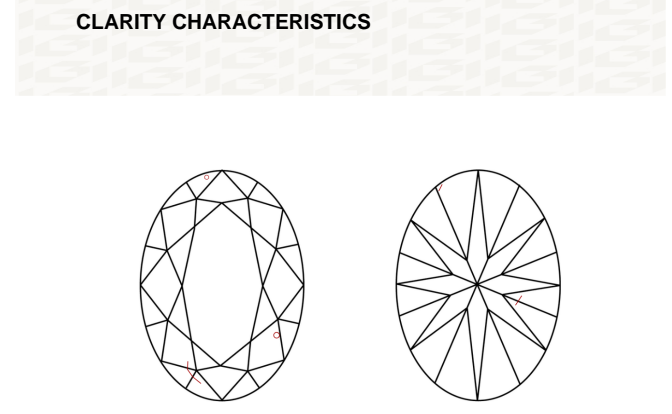
Comments:Faint Brown

ADDITIONAL INFORMATION

PROPORTIONS



CLARITY CHARACTERISTICS



KEY TO SYMBOLS

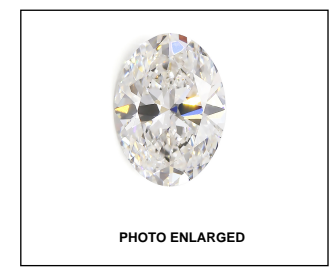
Red symbols indicate internal characteristics. Green symbols indicate external characteristics.

This Report is subject to the terms and conditions © IGI 2000, edition 2019 all rights reserved.

GRADING SCALES

Table with 5 columns for Color Grading Scale (CL, NC, FT, VLT, LT) and Clarity (10x) Grading Scale (FL, IF, VVS, VS, SI, I). Sub-labels include 'COLORLESS D-F', 'NEAR COLORLESS G-J', 'FAINT K-M', 'VERY LIGHT N-R', 'LIGHT S-Z', 'FLAWLESS INTERNALLY FLAWLESS', 'VERY VERY SLIGHTLY INCLUDED', 'VERY SLIGHTLY INCLUDED', 'SLIGHTLY INCLUDED', 'INCLUDED'.

The laboratory grown diamond described in this Report (Report) has been graded, tested, analyzed, examined and/or inscribed by International Gemological Institute (IGI). A laboratory grown diamond is one that has essentially the same chemical, physical and optical properties as a mined diamond, with the exception of being grown by man (a manufactured product). IGI employs and utilizes those techniques and equipment currently available to IGI, including, without limitation, 10X magnification, corrected triplet loupe, binocular microscope, master color comparison stones, non-contact-optical measuring device, Diamond Sure™, Diamond View™, Spectrophotometer and such other instruments and/or processes as deemed appropriate by IGI. This Report includes advanced security features. A duly accredited gemologist or jeweler can advise you with respect to the importance of and interrelationship between cut, color, clarity and carat weight. THIS REPORT IS NEITHER A GUARANTEE, VALUATION, NOR APPRAISAL OF THE GEMSTONE DESCRIBED HEREIN. PLEASE REVIEW THE LIMITATIONS AND RESTRICTIONS SET FORTH ONLINE. FOR ADDITIONAL INFORMATION, IMPORTANT LIMITATIONS AND DISCLAIMERS, PLEASE GO TO WWW.IGI.ORG OR CALL 1-888-BUY-IGIS. © INTERNATIONAL GEMOLOGICAL INSTITUTE, INC.



LASERSCRIBE SM

IGI LABORATORY GROWN DIAMOND GRADING REPORT

11/26/2020

IGI Report Number LG451056952

Shape and Cutting Style OVAL BRILLIANT

Measurements 8.76 X 6.54 X 4.16 MM

Carat Weight 1.52 CARAT

Color Grade K

Clarity Grade SI 1

GRADING RESULTS

Polish EXCELLENT

Symmetry EXCELLENT

Fluorescence NONE

Inscription(s) LABGROWN IGI LG451056952

Comments:Faint Brown

ADDITIONAL GRADING INFORMATION

Polish EXCELLENT

Symmetry EXCELLENT

Fluorescence NONE

Inscription(s) LABGROWN IGI LG451056952

Comments:Faint Brown



Summary of report details: 11/26/2020, IGI Report No LG451056952, OVAL BRILLIANT, 8.76 X 6.54 X 4.16 MM, Carat Weight 1.52 CARAT, Color Grade K, Clarity Grade SI 1, Depth 63.6%, Table 61.5%, Slightly Thick To Thick (Faceted), Polish EXCELLENT, Symmetry EXCELLENT, Fluorescence NONE, Inscription(s) LABGROWN IGI LG451056952, Comments: Faint Brown.