



**ELECTRONIC COPY**

**LABORATORY GROWN DIAMOND REPORT**

November 11, 2020  
 IGI Report Number **LG447099880**  
 Description **LABORATORY GROWN  
DIAMOND**  
 Shape and Cutting Style **ROUND BRILLIANT**  
 Measurements **7.80 - 7.85 X 4.71 MM**

**GRADING RESULTS**

Carat Weight **1.80 CARAT**  
 Color Grade **J**  
 Clarity Grade **VS 1**  
 Cut Grade **EXCELLENT**

**ADDITIONAL GRADING INFORMATION**

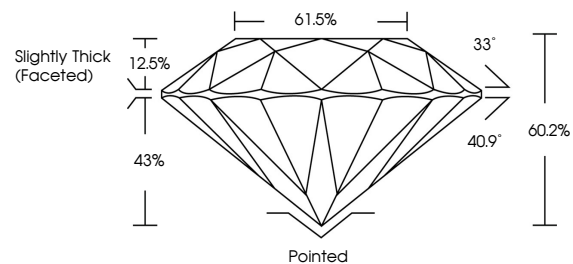
Polish **EXCELLENT**  
 Symmetry **EXCELLENT**  
 Fluorescence **NONE**  
 Inscription(s) **LABGROWN (IGI) LG447099880**

**LABORATORY GROWN DIAMOND REPORT**

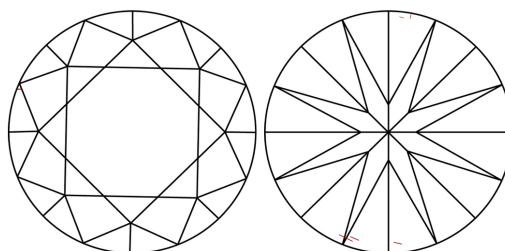
**LG447099880**

Report verification at [igi.org](http://igi.org)

**PROPORTIONS**



**CLARITY CHARACTERISTICS**



**KEY TO SYMBOLS**

Red symbols indicate internal characteristics.  
 Green symbols indicate external characteristics.

**LABORATORY GROWN  
DIAMOND REPORT**

**GRADING SCALES**

**CLARITY**

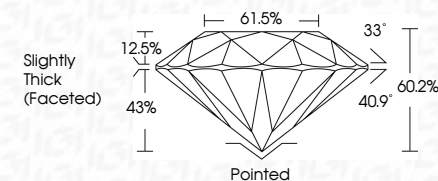
IF	VVS <sup>1-2</sup>	VS <sup>1-2</sup>	SI <sup>1-2</sup>	I <sup>1-3</sup>
Internally Flawless	Very Very Slightly Included	Very Slightly Included	Slightly Included	Included

**COLOR**

D	E	F	G	H	I	J	Faint	Very Light	Light
---	---	---	---	---	---	---	-------	------------	-------

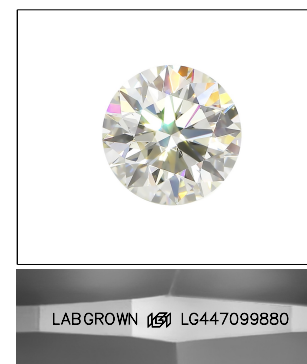
**LABORATORY GROWN DIAMOND REPORT**

November 11, 2020  
 IGI Report Number **LG447099880**  
 Description **LABORATORY GROWN  
DIAMOND**  
 Shape and Cutting Style **ROUND BRILLIANT**  
 Measurements **7.80 - 7.85 X 4.71 MM**  
**GRADING RESULTS**  
 Carat Weight **1.80 CARAT**  
 Color Grade **J**  
 Clarity Grade **VS 1**  
 Cut Grade **EXCELLENT**



**ADDITIONAL GRADING INFORMATION**

Polish **EXCELLENT**  
 Symmetry **EXCELLENT**  
 Fluorescence **NONE**  
 Inscription(s) **LABGROWN (IGI) LG447099880**



**LASERSCRIBE<sup>SM</sup>**

Sample Image Used



**IGI**

November 11, 2020  
 IGI Report No LG447099880  
 ROUND BRILLIANT  
 7.80 - 7.85 X 4.71 MM  
 Carat Weight **1.80 CARAT**  
 Color Grade **J**  
 Clarity Grade **VS 1**  
 Cut Grade **EXCELLENT**  
 Depth **60.2%**  
 Table **12.5%**  
 Pavilion Angle **40.9°**  
 Crown Angle **33°**  
 Total Depth **60.2%**  
 Slightly Thick (Faceted)  
 Pointed  
 Polish **EXCELLENT**  
 Symmetry **EXCELLENT**  
 Fluorescence **NONE**  
 Inscription(s) **LABGROWN (IGI) LG447099880**