



IGI GEMOLOGICAL REPORT

IGI LABORATORY GROWN DIAMOND GRADING REPORT

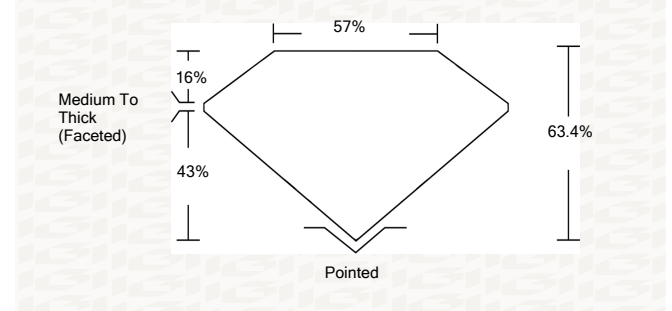
11/11/2020
IGI Report Number LG447099353
Shape and Cutting Style OVAL BRILLIANT
Measurements 9.25 X 6.72 X 4.26 MM
GRADING RESULTS
Carat Weight 1.70 CARAT
Color Grade K
Clarity Grade SI 1

ADDITIONAL GRADING INFORMATION

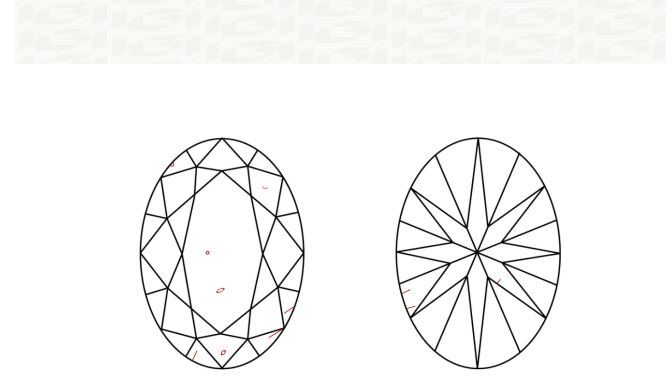
Polish EXCELLENT
Symmetry EXCELLENT
Fluorescence NONE
Inscription(s) LABGROWN IGI LG447099353

ADDITIONAL INFORMATION

PROPORTIONS



CLARITY CHARACTERISTICS



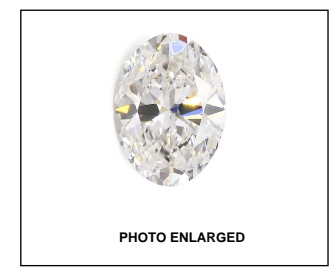
KEY TO SYMBOLS
Red symbols indicate internal characteristics.
Green symbols indicate external characteristics.

This Report is subject to the terms and conditions
© IGI 2000, edition 2019 all rights reserved.

GRADING SCALES

Table with 5 columns for Color Grading Scale (CL, NC, FT, VLT, LT) and Clarity (10x) Grading Scale (FL, IF, VVS, VS, SI, I).

The laboratory grown diamond described in this Report (Report) has been graded, tested, analyzed, examined and/or inscribed by International Gemological Institute (IGI). A laboratory grown diamond is one that has essentially the same chemical, physical and optical properties as a mined diamond...

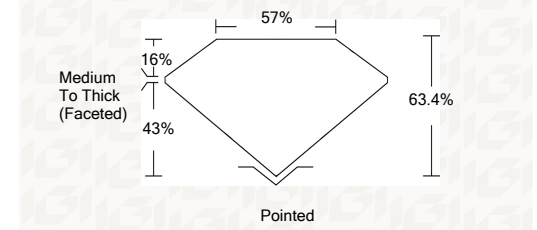


IGI LABORATORY GROWN DIAMOND GRADING REPORT

11/11/2020
IGI Report Number LG447099353
Shape and Cutting Style OVAL BRILLIANT
Measurements 9.25 X 6.72 X 4.26 MM
GRADING RESULTS
Carat Weight 1.70 CARAT
Color Grade K
Clarity Grade SI 1

ADDITIONAL GRADING INFORMATION

Polish EXCELLENT
Symmetry EXCELLENT
Fluorescence NONE
Inscription(s) LABGROWN IGI LG447099353



IGI



11/11/2020
IGI Report No LG447099353
OVAL BRILLIANT
9.25 X 6.72 X 4.26 MM
Carat Weight 1.70 CARAT
Color Grade K
Clarity Grade SI 1
Depth 63.4%
Table 57%
Medium To Thick (Faceted)
Culet None
Polish EXCELLENT
Symmetry EXCELLENT
Fluorescence NONE
Inscription(s) LABGROWN IGI LG447099353