



IGI GEMOLOGICAL REPORT

IGI LABORATORY GROWN DIAMOND GRADING REPORT

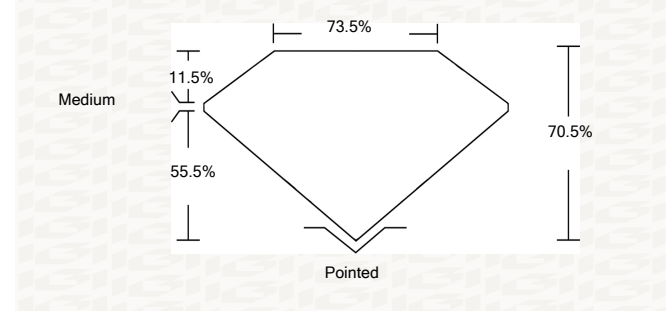
11/05/2020
IGI Report Number LG447000699
Shape and Cutting Style PRINCESS CUT
Measurements 6.87 X 6.81 X 4.80 MM
GRADING RESULTS
Carat Weight 2.00 CARATS
Color Grade K
Clarity Grade SI 1

ADDITIONAL GRADING INFORMATION

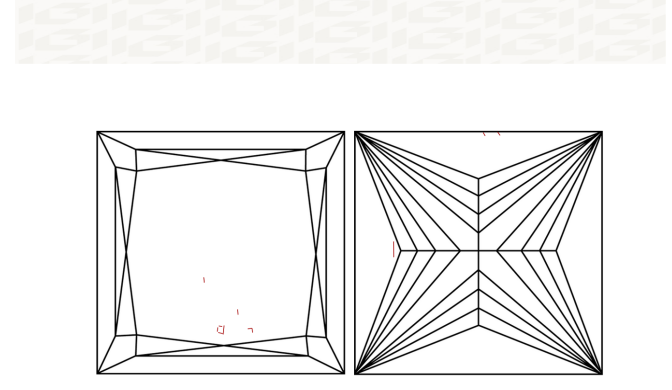
Polish EXCELLENT
Symmetry EXCELLENT
Fluorescence NONE
Inscription(s) LABGROWN IGI LG447000699

ADDITIONAL INFORMATION

PROPORTIONS



CLARITY CHARACTERISTICS



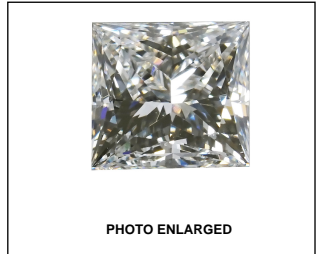
KEY TO SYMBOLS
Red symbols indicate internal characteristics.
Green symbols indicate external characteristics.

This Report is subject to the terms and conditions
© IGI 2000, edition 2019 all rights reserved.

GRADING SCALES

Table with 5 columns for Color Grading Scale (CL, NC, FT, VLT, LT) and Clarity (10x) Grading Scale (FL, IF, VVS, VS, SI, I).

The laboratory grown diamond described in this Report (Report) has been graded, tested, analyzed, examined and/or inscribed by International Gemological Institute (IGI). A laboratory grown diamond is one that has essentially the same chemical, physical and optical properties as a mined diamond...

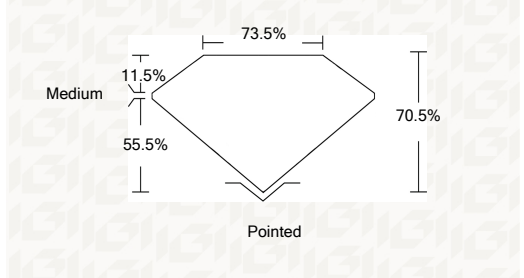


LABGROWN IGI LG447000699
LASERSCRIBE SM



IGI LABORATORY GROWN DIAMOND GRADING REPORT

11/05/2020
IGI Report Number LG447000699
Shape and Cutting Style PRINCESS CUT
Measurements 6.87 X 6.81 X 4.80 MM
GRADING RESULTS
Carat Weight 2.00 CARATS
Color Grade K
Clarity Grade SI 1



ADDITIONAL GRADING INFORMATION

Polish EXCELLENT
Symmetry EXCELLENT
Fluorescence NONE
Inscription(s) LABGROWN IGI LG447000699



IGI



11/05/2020
IGI Report No LG447000699
PRINCESS CUT
6.87 X 6.81 X 4.80 MM
Carat Weight 2.00 CARATS
Color Grade K
Clarity Grade SI 1
Depth 70.5%
Table 73.5%
Girdle Medium
Culet Pointed
Polish EXCELLENT
Symmetry EXCELLENT
Fluorescence NONE
Inscription(s) LABGROWN IGI LG447000699