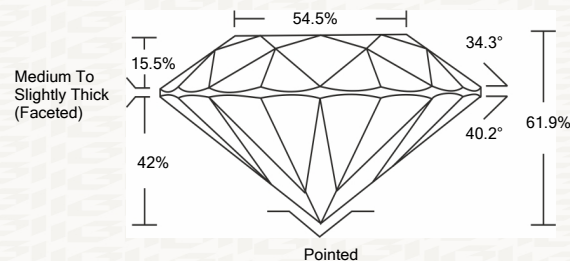




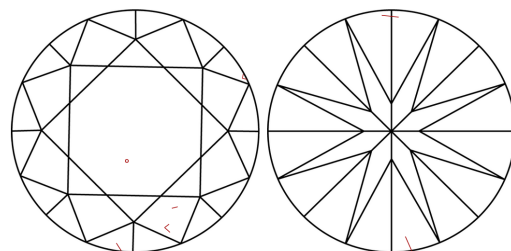
IGI GEMOLOGICAL REPORT

ADDITIONAL INFORMATION

PROPORTIONS



CLARITY CHARACTERISTICS



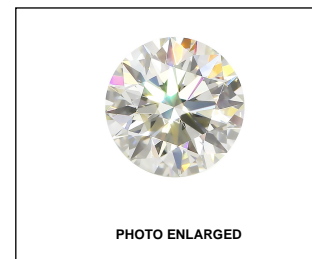
KEY TO SYMBOLS

Red symbols indicate internal characteristics. Green symbols indicate external characteristics.

GRADING SCALES

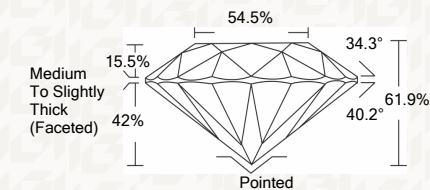
Table with 2 rows and 5 columns showing grading scales for Color and Clarity.

The laboratory grown diamond described in this Report (Report) has been graded, tested, analyzed, examined and/or inscribed by International Gemological Institute (I.G.I.).



IGI LABORATORY GROWN DIAMOND GRADING REPORT

10/19/2020 IGI Report Number LG445037579 Shape and Cutting Style ROUND BRILLIANT Measurements 7.75 - 7.78 X 4.81 MM GRADING RESULTS Carat Weight 1.80 CARAT Color Grade I Clarity Grade VS 2 Cut Grade IDEAL



ADDITIONAL GRADING INFORMATION

Polish EXCELLENT Symmetry EXCELLENT Fluorescence NONE Inscription(s) LABGROWN IGI LG445037579

IGI LABORATORY GROWN DIAMOND GRADING REPORT

10/19/2020 IGI Report Number LG445037579 Shape and Cutting Style ROUND BRILLIANT Measurements 7.75 - 7.78 X 4.81 MM

GRADING RESULTS

Carat Weight 1.80 CARAT Color Grade I Clarity Grade VS 2 Cut Grade IDEAL

ADDITIONAL GRADING INFORMATION

Polish EXCELLENT Symmetry EXCELLENT Fluorescence NONE Inscription(s) LABGROWN IGI LG445037579



This Report is subject to the terms and conditions

© IGI 2000, edition 2019 all rights reserved.



IGI

Vertical text block containing report details: 10/19/2020 IGI Report No. LG445037579 ROUND BRILLIANT 7.75 - 7.78 X 4.81 MM 1.80 CARAT VS 2 IDEAL 61.9% 64.6% Medium To Slightly Thick (Faceted) Pointed EXCELLENT EXCELLENT NONE LABGROWN IGI LG445037579