



INTERNATIONAL  
GEMOLOGICAL  
INSTITUTE

ELECTRONIC COPY

LG445037414

LABORATORY GROWN DIAMOND REPORT

EDUCATIONAL AND LABORATORY  
FOR THE IDENTIFICATION AND GRADING  
OF DIAMONDS AND COLORED STONES

GRADING SCALES

| COLOR<br>GRADING<br>SCALE         | CL               |                   | NC                                |                              | FT                   | VLT               |  | LT           |
|-----------------------------------|------------------|-------------------|-----------------------------------|------------------------------|----------------------|-------------------|--|--------------|
|                                   | COLORLESS<br>D-F |                   | NEAR<br>COLORLESS<br>G-J          |                              | FAINT<br>K-M         | VERY LIGHT<br>N-R |  | LIGHT<br>S-Z |
| CLARITY (10X)<br>GRADING<br>SCALE | FL               | IF                | VVS                               | VS                           | SI                   | I                 |  |              |
|                                   | FLAWLESS         | INTERNAL FLAWLESS | VERY VERY<br>SLIGHTLY<br>INCLUDED | VERY<br>SLIGHTLY<br>INCLUDED | SLIGHTLY<br>INCLUDED | INCLUDED          |  |              |

The laboratory grown diamond described in this Report (Report) has been graded, tested, analyzed, examined and/or inscribed by International Gemological Institute (IGI). A laboratory grown diamond is one that has essentially the same chemical, physical and optical properties as a mined diamond, with the exception of being grown by man (a manufactured product). IGI employs and utilizes those techniques and equipment currently available to IGI, including, without limitation, 10X magnification, corrected triplet loupe, binocular microscope, master color comparison stones, non-contact-optical measuring device, Diamond Sure™, Diamond View™, Spectrophotometer and such other instruments and/or processes as deemed appropriate by IGI. This Report includes advanced security features. A duly accredited gemologist or jeweler can advise you with respect to the importance of and interrelationship between cut, color, clarity and carat weight.

THIS REPORT IS NEITHER A GUARANTEE, VALUATION, NOR APPRAISAL OF THE GEMSTONE DESCRIBED HEREIN. PLEASE REVIEW THE LIMITATIONS AND RESTRICTIONS SET FORTH ONLINE. FOR ADDITIONAL INFORMATION, IMPORTANT LIMITATIONS AND DISCLAIMERS, PLEASE GO TO WWW.IGI.ORG OR CALL 1-888-BUY-IGIS.

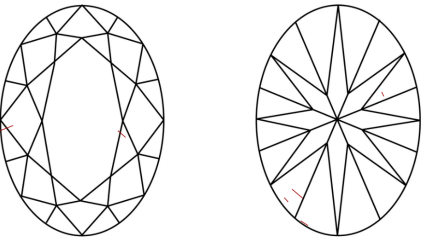
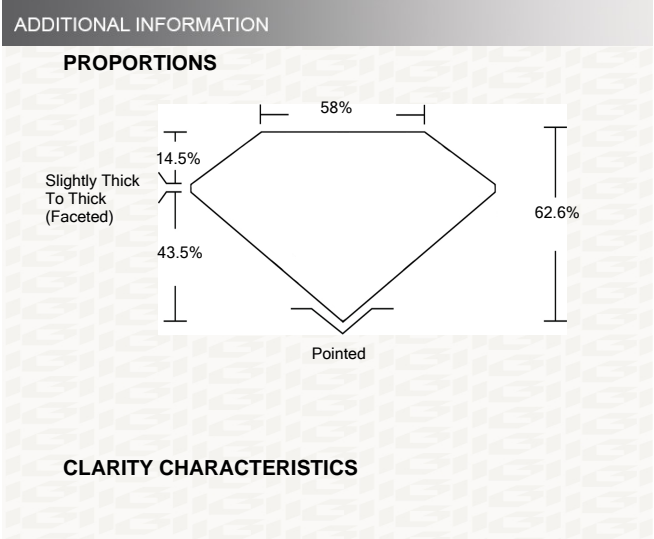
© INTERNATIONAL GEMOLOGICAL INSTITUTE, INC.



PHOTO ENLARGED



LASERSCRIBE SM



KEY TO SYMBOLS

Red symbols indicate internal characteristics.  
Green symbols indicate external characteristics.

This Report is subject to the terms and conditions

© IGI 2000, edition 2019 all rights reserved.

IGI LABORATORY GROWN DIAMOND GRADING REPORT

10/18/2020

IGI Report Number **LG445037414**

Shape and Cutting Style **OVAL BRILLIANT**

Measurements **10.05 X 7.27 X 4.55 MM**

GRADING RESULTS

Carat Weight **2.12 CARATS**

Color Grade **I**

Clarity Grade **VS 2**

58%  
14.5%  
43.5%  
62.6%  
Pointed

ADDITIONAL GRADING INFORMATION

Polish **EXCELLENT**

Symmetry **VERY GOOD**

Fluorescence **NONE**

Inscription(s) **LABGROWN IGI LG445037414**



IGI

|            |                           |                |                        |              |             |             |   |               |      |       |       |       |     |                                   |         |       |           |        |           |          |      |              |                          |                |
|------------|---------------------------|----------------|------------------------|--------------|-------------|-------------|---|---------------|------|-------|-------|-------|-----|-----------------------------------|---------|-------|-----------|--------|-----------|----------|------|--------------|--------------------------|----------------|
| 10/18/2020 | IGI Report No LG445037414 | OVAL BRILLIANT | 10.05 X 7.27 X 4.55 MM | Carat Weight | 2.12 CARATS | Color Grade | I | Clarity Grade | VS 2 | Depth | 62.6% | Table | 58% | Slightly Thick To Thick (Faceted) | Pointed | Culet | EXCELLENT | Polish | VERY GOOD | Symmetry | NONE | Fluorescence | LABGROWN IGI LG445037414 | Inscription(s) |
|------------|---------------------------|----------------|------------------------|--------------|-------------|-------------|---|---------------|------|-------|-------|-------|-----|-----------------------------------|---------|-------|-----------|--------|-----------|----------|------|--------------|--------------------------|----------------|

