



IGI GEMOLOGICAL REPORT

IGI LABORATORY GROWN DIAMOND GRADING REPORT

09/21/2020 IGI Report Number LG440013530

Shape and Cutting Style OVAL BRILLIANT

Measurements 9.98 X 7.22 X 4.59 MM

GRADING RESULTS

Carat Weight 2.04 CARATS

Color Grade J

Clarity Grade SI 1

ADDITIONAL GRADING INFORMATION

Polish EXCELLENT

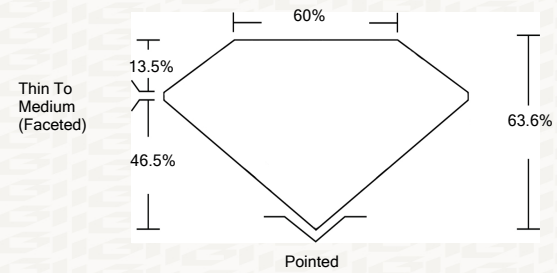
Symmetry EXCELLENT

Fluorescence NONE

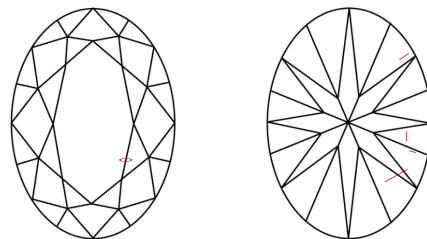
Inscription(s) LABGROWN IGI LG440013530

ADDITIONAL INFORMATION

PROPORTIONS



CLARITY CHARACTERISTICS



KEY TO SYMBOLS

Red symbols indicate internal characteristics. Green symbols indicate external characteristics.

GRADING SCALES

Table with 5 columns for Color Grading Scale (CL, NC, FT, VLT, LT) and Clarity (10x) Grading Scale (FL, IF, VVS, VS, SI, I).

The laboratory grown diamond described in this Report (Report) has been graded, tested, analyzed, examined and/or inscribed by International Gemological Institute (IGI). A laboratory grown diamond is one that has essentially the same chemical, physical and optical properties as a mined diamond...

© INTERNATIONAL GEMOLOGICAL INSTITUTE, INC.

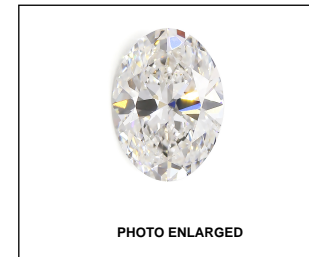


PHOTO ENLARGED



LASERSCRIBE SM

IGI LABORATORY GROWN DIAMOND GRADING REPORT

09/21/2020 IGI Report Number LG440013530

Shape and Cutting Style OVAL BRILLIANT

Measurements 9.98 X 7.22 X 4.59 MM

GRADING RESULTS

Carat Weight 2.04 CARATS

Color Grade J

Clarity Grade SI 1

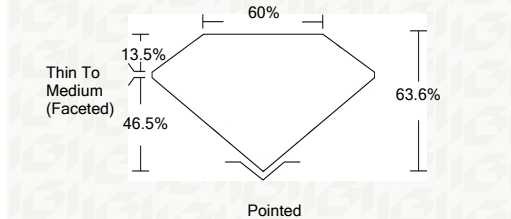
ADDITIONAL GRADING INFORMATION

Polish EXCELLENT

Symmetry EXCELLENT

Fluorescence NONE

Inscription(s) LABGROWN IGI LG440013530



This Report is subject to the terms and conditions

© IGI 2000, edition 2019 all rights reserved.

THE DOCUMENT WAS PRODUCED THE FOLLOWING SECURITY MEASURES: SPECIAL DOCUMENT PAPER, INK SCREENS, WATERMARK, BACKGROUND DESIGNS, HOLOGRAM AND OTHER SECURITY FEATURES NOT LISTED AND DO EXCEED DOCUMENT SECURITY INDUSTRY DUDLINES



IGI

Summary table of report details: 09/21/2020, IGI Report No LG440013530, OVAL BRILLIANT, 9.98 X 7.22 X 4.59 MM, 2.04 CARATS, J, SI 1, EXCELLENT, EXCELLENT, NONE, LABGROWN IGI LG440013530