



IGI GEMOLOGICAL REPORT

ADDITIONAL INFORMATION

GRADING SCALES

COLOR GRADING SCALE	CL	NC	FT	VL	LT	
	COLORLESS D-F	NEAR COLORLESS G-J	FAINT K-M	VERY LIGHT N-R	LIGHT S-Z	
CLARITY (10x) GRADING SCALE	FL	IF	VVS	VS	SI	I
	FLAWLESS INTERNALLY FLAWLESS	VERY VERY SLIGHTLY INCLUDED	VERY SLIGHTLY INCLUDED	SLIGHTLY INCLUDED	INCLUDED	

The laboratory grown diamond described in this Report (Report) has been graded, tested, analyzed, examined and/or inscribed by International Gemological Institute (I.G.I.). A laboratory grown diamond is one that has essentially the same chemical, physical and optical properties as a mined diamond, with the exception of being grown by man (a manufactured product). I.G.I. employs and utilizes those techniques and equipment currently available to I.G.I., including, without limitation, 10X magnification, corrected triplet loupe, binocular microscope, master color comparison stones, non-contact optical measuring devices, Diamond Sure™, Diamond View™, Spectrophotometer and such other instruments and/or processes as deemed appropriate by I.G.I. This Report includes advanced security features. A duly accredited gemologist or jeweler can advise you with respect to the importance of and interrelationship between cut, color, clarity and carat weight. **THIS REPORT IS NEITHER A GUARANTEE, VALUATION, NOR APPRAISAL OF THE GEMSTONE DESCRIBED HEREIN. PLEASE REVIEW THE LIMITATIONS AND RESTRICTIONS SET FORTH ONLINE. FOR ADDITIONAL INFORMATION, IMPORTANT LIMITATIONS AND DISCLAIMERS, PLEASE GO TO WWW.IGI.ORG OR CALL 1-888-BUY-IGIS.**

© INTERNATIONAL GEMOLOGICAL INSTITUTE, INC.

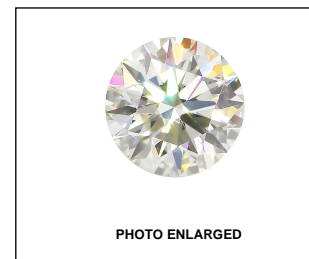


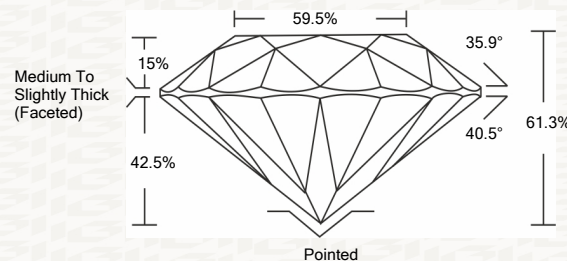
PHOTO ENLARGED



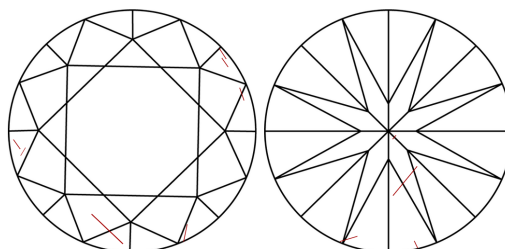
LASERSCRIBE SM



PROPORTIONS



CLARITY CHARACTERISTICS



KEY TO SYMBOLS

Red symbols indicate internal characteristics.
Green symbols indicate external characteristics.

This Report is subject to the terms and conditions

© IGI 2000, edition 2019 all rights reserved.

IGI LABORATORY GROWN DIAMOND GRADING REPORT

09/15/2020

IGI Report Number **LG436074915**

Shape and Cutting Style **ROUND BRILLIANT**

Measurements **8.08 - 8.12 X 4.97 MM**

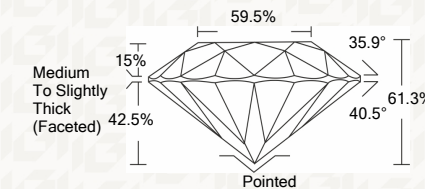
GRADING RESULTS

Carat Weight **2.03 CARATS**

Color Grade **I**

Clarity Grade **SI 2**

Cut Grade **IDEAL**



ADDITIONAL GRADING INFORMATION

Polish **EXCELLENT**

Symmetry **EXCELLENT**

Fluorescence **NONE**

Inscription(s) **LABGROWN IGI LG436074915**



IGI

IGI LABORATORY GROWN DIAMOND GRADING REPORT

09/15/2020

IGI Report Number **LG436074915**

Shape and Cutting Style **ROUND BRILLIANT**

Measurements **8.08 - 8.12 X 4.97 MM**

GRADING RESULTS

Carat Weight **2.03 CARATS**

Color Grade **I**

Clarity Grade **SI 2**

Cut Grade **IDEAL**

ADDITIONAL GRADING INFORMATION

Polish **EXCELLENT**

Symmetry **EXCELLENT**

Fluorescence **NONE**

Inscription(s) **LABGROWN IGI LG436074915**



09/15/2020	IGI Report No LG436074915	2.03 CARATS	I	EXCELLENT	EXCELLENT	NONE	LABGROWN IGI LG436074915
	ROUND BRILLIANT		SI 2				
	8.08 - 8.12 X 4.97 MM		IDEAL				
	Color Grade		81.3%				
	Cut Grade		69.6%				
	Table		Medium To Slightly Thick (Faceted)				
	Grille		Pointed				
	Culet		EXCELLENT				
	Polish		EXCELLENT				
	Symmetry		EXCELLENT				
	Fluorescence		NONE				
	Inscription(s)		LABGROWN IGI LG436074915				