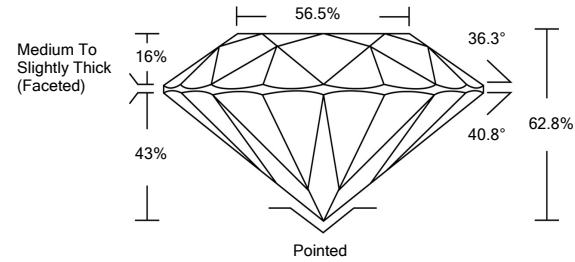




LG436074626

LABORATORY GROWN DIAMOND REPORT

PROPORTIONS



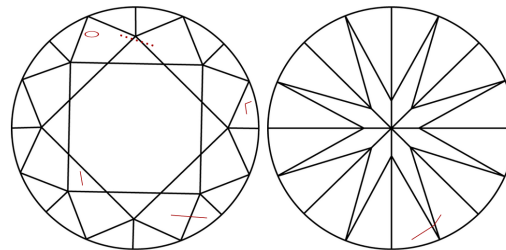
GRADING SCALES

Table with 5 columns for Color Grading Scale (CL to LT) and Clarity (10x) Grading Scale (FL to I).

The laboratory grown diamond described in this Report (Report) has been graded, tested, analyzed, examined and/or inscribed by International Gemological Institute (IGI). A laboratory grown diamond is one that has essentially the same chemical, physical and optical properties as a mined diamond...

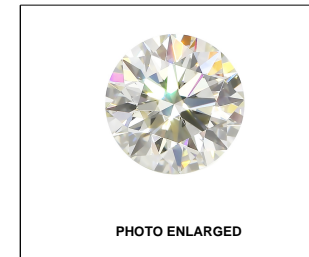
© INTERNATIONAL GEMOLOGICAL INSTITUTE, INC.

CLARITY CHARACTERISTICS



KEY TO SYMBOLS

Red symbols indicate internal characteristics. Green symbols indicate external characteristics.



LABGROWN IGI LG436074626

LASERSCRIBE<sup>SM</sup>

06/02/2021

IGI Report Number LG436074626

Shape and Cutting Style ROUND BRILLIANT

Measurements 7.03 - 7.05 x 4.42 mm

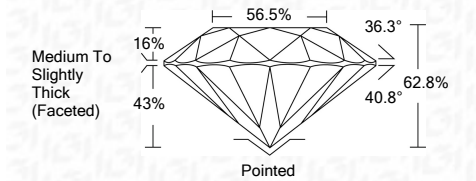
GRADING RESULTS

Carat Weight 1.35 CARAT

Color Grade J

Clarity Grade SI 1

Cut Grade EXCELLENT



ADDITIONAL GRADING INFORMATION

Polish EXCELLENT

Symmetry EXCELLENT

Fluorescence NONE

Inscription(s) LABGROWN IGI LG436074626

Comments: This Laboratory Grown Diamond was created by Chemical Vapor Deposition (CVD) growth process and may include post-growth treatment. Type IIa



IGI

Summary table of diamond characteristics: 06/02/2021, IGI Report No. LG436074626, ROUND BRILLIANT, 7.03 - 7.05 x 4.42 mm, 1.35 CARAT, J, SI 1, EXCELLENT, 62.8%, 56.5%, Medium To Slightly Thick (Faceted), Pointed, EXCELLENT, EXCELLENT, NONE, LABGROWN IGI LG436074626.

