



IGI GEMOLOGICAL REPORT

IGI LABORATORY GROWN DIAMOND GRADING REPORT

07/27/2020

IGI Report Number **LG425067491**

Shape and Cutting Style **HEART BRILLIANT**

Measurements **7.63 X 8.62 X 5.16 MM**

GRADING RESULTS

Carat Weight **2.00 CARATS**

Color Grade **I**

Clarity Grade **VS 2**

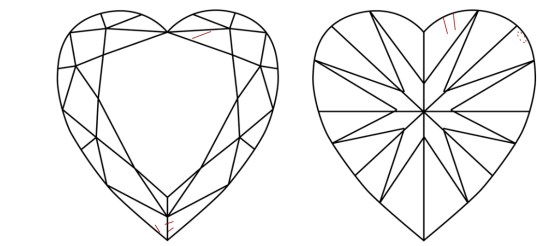
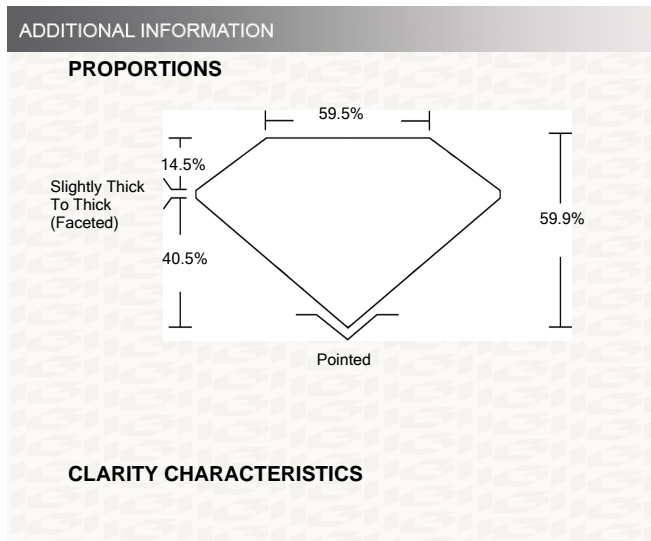
ADDITIONAL GRADING INFORMATION

Polish **VERY GOOD**

Symmetry **VERY GOOD**

Fluorescence **NONE**

Inscription(s) **LABGROWN IGI LG425067491**



KEY TO SYMBOLS

Red symbols indicate internal characteristics.
Green symbols indicate external characteristics.

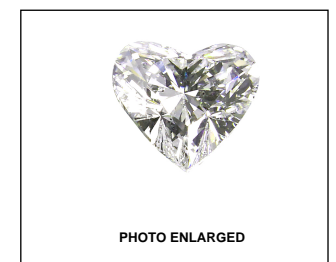
GRADING SCALES

COLOR GRADING SCALE	CL	NC	FT	VL	LT	
	COLORLESS D-F	NEAR COLORLESS G-J	FAINT K-M	VERY LIGHT N-R	LIGHT S-Z	
CLARITY (10X) GRADING SCALE	FL	IF	VVS	VS	SI	I
	FLAWLESS	INTERNALLY FLAWLESS	VERY VERY SLIGHTLY INCLUDED	VERY SLIGHTLY INCLUDED	SLIGHTLY INCLUDED	INCLUDED

The laboratory grown diamond described in this Report (Report) has been graded, tested, analyzed, examined and/or inscribed by International Gemological Institute (IGI). A laboratory grown diamond is one that has essentially the same chemical, physical and optical properties as a mined diamond, with the exception of being grown by man (a manufactured product). IGI employs and utilizes those techniques and equipment currently available to IGI, including, without limitation, 10X magnification, corrected triplet loupe, binocular microscope, master color comparison stones, non-contact-optical measuring device, Diamond Sure™, Diamond View™, Spectrophotometer and such other instruments and/or processes as deemed appropriate by IGI. This Report includes advanced security features. A duly accredited gemologist or jeweler can advise you with respect to the importance of and interrelationship between cut, color, clarity and carat weight.

THIS REPORT IS NEITHER A GUARANTEE, VALUATION, NOR APPRAISAL OF THE GEMSTONE DESCRIBED HEREIN. PLEASE REVIEW THE LIMITATIONS AND RESTRICTIONS SET FORTH ONLINE. FOR ADDITIONAL INFORMATION, IMPORTANT LIMITATIONS AND DISCLAIMERS, PLEASE GO TO WWW.IGI.ORG OR CALL 1-888-BUY-IGI.

© INTERNATIONAL GEMOLOGICAL INSTITUTE, INC.



IGI LABORATORY GROWN DIAMOND GRADING REPORT

07/27/2020

IGI Report Number **LG425067491**

Shape and Cutting Style **HEART BRILLIANT**

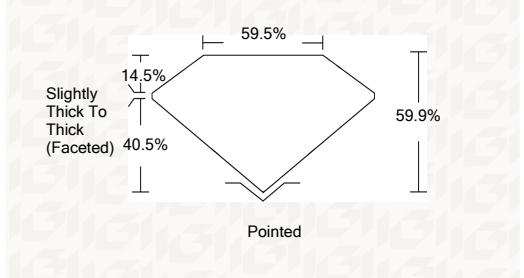
Measurements **7.63 X 8.62 X 5.16 MM**

GRADING RESULTS

Carat Weight **2.00 CARATS**

Color Grade **I**

Clarity Grade **VS 2**



ADDITIONAL GRADING INFORMATION

Polish **VERY GOOD**

Symmetry **VERY GOOD**

Fluorescence **NONE**

Inscription(s) **LABGROWN IGI LG425067491**



This Report is subject to the terms and conditions

© IGI 2000, edition 2019 all rights reserved.

THE DOCUMENT WAS PRODUCED THE FOLLOWING SECURITY MEASURES: SPECIAL DOCUMENT PAPER, INK SCREENS, WATERMARK, BACKGROUND DESIGNS, HOLOGRAM AND OTHER SECURITY FEATURES NOT LISTED AND DO EXCEED DOCUMENT SECURITY INDUSTRY DUDLINES



07/27/2020
IGI Report No LG425067491
HEART BRILLIANT
7.63 X 8.62 X 5.16 MM
Carat Weight 2.00 CARATS
Color Grade I
Clarity Grade VS 2
Depth 59.9%
Table 59.5%
Slightly Thick To Thick (Faceted)
Culet None
Polish VERY GOOD
Symmetry VERY GOOD
Fluorescence NONE
Inscription(s) LABGROWN IGI LG425067491