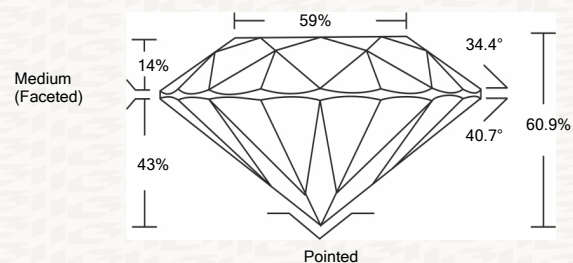




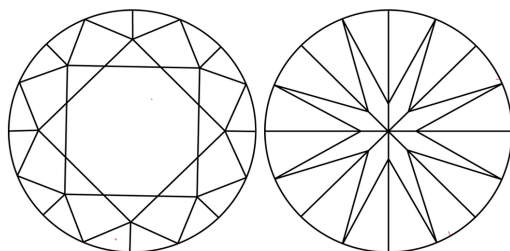
IGI GEMOLOGICAL REPORT

ADDITIONAL INFORMATION

PROPORTIONS



CLARITY CHARACTERISTICS



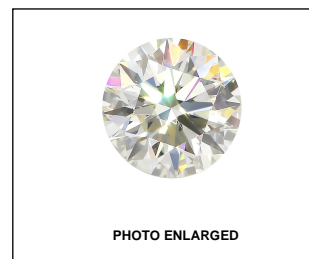
KEY TO SYMBOLS

Red symbols indicate internal characteristics. Green symbols indicate external characteristics.

GRADING SCALES

Table with 2 columns: COLOR GRADING SCALE (CL, NC, FT, VLT, LT) and CLARITY (10x) GRADING SCALE (FL, IF, VVS, VS, SI, I).

The laboratory grown diamond described in this Report (Report) has been graded, tested, analyzed, examined and/or inscribed by International Gemological Institute (I.G.I.).

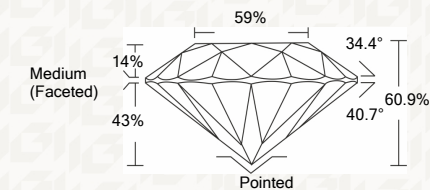


IGI LABORATORY GROWN DIAMOND GRADING REPORT

07/14/2020 IGI Report Number LG425065005 Shape and Cutting Style ROUND BRILLIANT Measurements 7.73 - 7.75 X 4.71 MM

GRADING RESULTS

Carat Weight 1.74 CARAT Color Grade J Clarity Grade VVS 2 Cut Grade IDEAL



ADDITIONAL GRADING INFORMATION

Polish EXCELLENT Symmetry EXCELLENT Fluorescence NONE Inscription(s) LABGROWN IGI LG425065005

IGI LABORATORY GROWN DIAMOND GRADING REPORT

07/14/2020 IGI Report Number LG425065005 Shape and Cutting Style ROUND BRILLIANT Measurements 7.73 - 7.75 X 4.71 MM

GRADING RESULTS

Carat Weight 1.74 CARAT Color Grade J Clarity Grade VVS 2 Cut Grade IDEAL

ADDITIONAL GRADING INFORMATION

Polish EXCELLENT Symmetry EXCELLENT Fluorescence NONE Inscription(s) LABGROWN IGI LG425065005



IGI

This Report is subject to the terms and conditions

© IGI 2000, edition 2019 all rights reserved.

THE DOCUMENT WAS PRODUCED THE FOLLOWING SECURITY MEASURES: SPECIAL DOCUMENT PAPER, INK SCREENS, WATERMARK, BACKGROUND DESIGNS, HOLOGRAM AND OTHER SECURITY FEATURES NOT LISTED AND DO EXCEED DOCUMENT SECURITY INDUSTRY DUDLINES

07/14/2020 IGI Report No. LG425065005 ROUND BRILLIANT 7.73 - 7.75 X 4.71 MM 1.74 CARAT J VVS 2 IDEAL 60.9% 59% Medium (Faceted) Pointed EXCELLENT EXCELLENT NONE LABGROWN IGI LG425065005