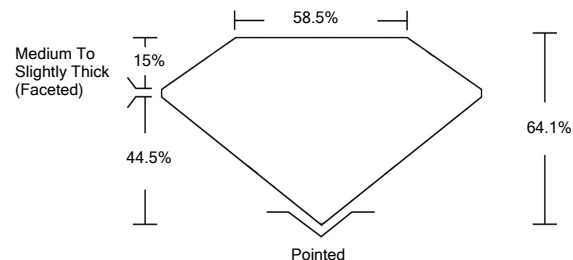




LG414059851

LABORATORY GROWN DIAMOND REPORT

PROPORTIONS

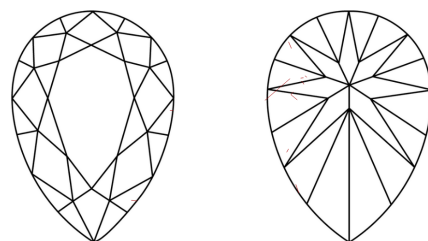


GRADING SCALES

Table with 5 columns for Color Grading Scale (CL to LT) and Clarity (10x) Grading Scale (FL to I).

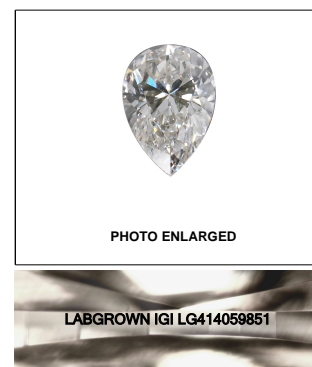
The laboratory grown diamond described in this Report (Report) has been graded, tested, analyzed, examined and/or inscribed by International Gemological Institute (IGI). A laboratory grown diamond is one that has essentially the same chemical, physical and optical properties as a mined diamond...

CLARITY CHARACTERISTICS



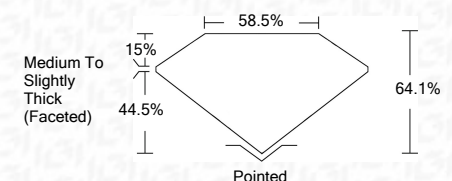
KEY TO SYMBOLS

Red symbols indicate internal characteristics. Green symbols indicate external characteristics.



LASERSCRIBE SM

05/18/2020 IGI Report Number LG414059851 Shape and Cutting Style PEAR BRILLIANT Measurements 8.59 x 5.51 x 3.53 mm GRADING RESULTS Carat Weight 1.01 CARAT Color Grade I Clarity Grade SI 1



ADDITIONAL GRADING INFORMATION

Polish EXCELLENT Symmetry VERY GOOD Fluorescence NONE Inscription(s) LABGROWN IGI LG414059851

Comments: This Laboratory Grown Diamond was created by Chemical Vapor Deposition (CVD) growth process. Type IIa

05/18/2020 IGI Report Number LG414059851 Shape and Cutting Style PEAR BRILLIANT Measurements 8.59 x 5.51 x 3.53 mm GRADING RESULTS Carat Weight 1.01 CARAT Color Grade I Clarity Grade SI 1

ADDITIONAL GRADING INFORMATION

Polish EXCELLENT Symmetry VERY GOOD Fluorescence NONE Inscription(s) LABGROWN IGI LG414059851

Comments: This Laboratory Grown Diamond was created by Chemical Vapor Deposition (CVD) growth process. Type IIa



IGI

05/18/2020 IGI Report No. LG414059851 PEAR BRILLIANT 8.59 x 5.51 x 3.53 mm 1.01 CARAT I SI 1 64.1% 58.5% Medium To Slightly Thick (Faceted) Pointed EXCELLENT VERY GOOD NONE LABGROWN IGI LG414059851 Comments: This Laboratory Grown Diamond was created by Chemical Vapor Deposition (CVD) growth process. Type IIa