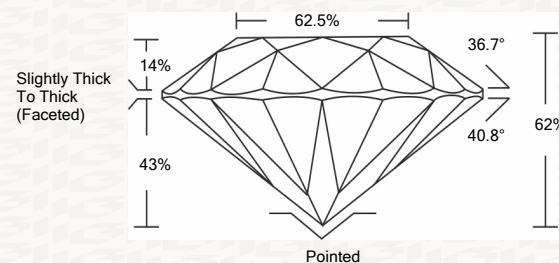




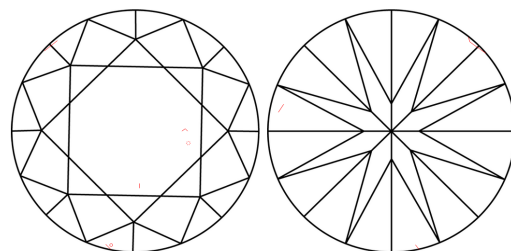
IGI GEMOLOGICAL REPORT

ADDITIONAL INFORMATION

PROPORTIONS



CLARITY CHARACTERISTICS



KEY TO SYMBOLS

Red symbols indicate internal characteristics. Green symbols indicate external characteristics.

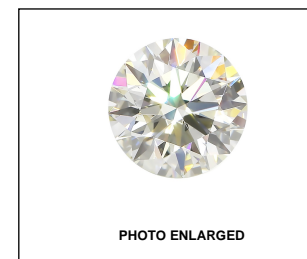
This Report is subject to the terms and conditions

© IGI 2000, edition 2019 all rights reserved.

GRADING SCALES

Table with 5 columns: COLOR GRADING SCALE (CL, NC, FT, VLT, LT), CLARITY (10x) GRADING SCALE (FL, IF, VVS, VS, SI, I)

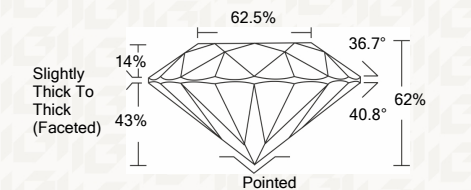
The laboratory grown diamond described in this Report (Report) has been graded, tested, analyzed, examined and/or inscribed by International Gemological Institute (I.G.I.).



THE DOCUMENT WAS PRODUCED THE FOLLOWING SECURITY MEASURES: SPECIAL DOCUMENT SECURITY PAPER, SECURITY MARK, BACKGROUND DESIGNS HOLOGRAM AND OTHER SECURITY FEATURES NOT LISTED AND DO NOT REPRODUCE ANY INDUSTRY DUPLICATES

IGI LABORATORY GROWN DIAMOND GRADING REPORT

02/28/2020 IGI Report Number LG407950848 Shape and Cutting Style ROUND BRILLIANT Measurements 7.93 - 8.01 X 4.94 MM GRADING RESULTS Carat Weight 2.00 CARATS Color Grade J Clarity Grade VS 1 Cut Grade VERY GOOD



ADDITIONAL GRADING INFORMATION

Polish EXCELLENT Symmetry EXCELLENT Fluorescence NONE Inscription(s) LABGROWN IGI LG407950848

Comments: This Laboratory grown diamond was created by chemical vapor deposition process (CVD) Type IIa



IGI

02/28/2020 IGI Report No. LG407950848 ROUND BRILLIANT 7.93 - 8.01 X 4.94 MM Carat Weight 2.00 CARATS Color Grade J Clarity Grade VS 1 Cut Grade VERY GOOD Depth 62% Table Slightly Thick To Thick (Faceted) Girdle Pointed Culet Polished Polish EXCELLENT Symmetry EXCELLENT Fluorescence NONE Inscription(s) LABGROWN IGI LG407950848 Comments: This Laboratory grown diamond was created by chemical vapor deposition process (CVD) Type IIa

