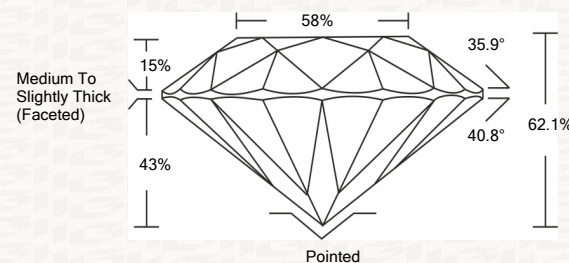




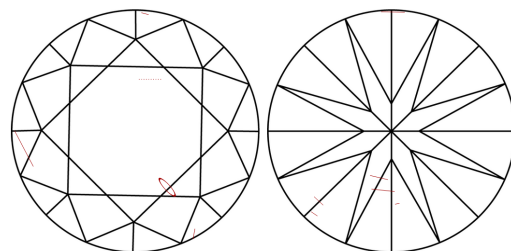
IGI GEMOLOGICAL REPORT

ADDITIONAL INFORMATION

PROPORTIONS



CLARITY CHARACTERISTICS



KEY TO SYMBOLS

Red symbols indicate internal characteristics. Green symbols indicate external characteristics.

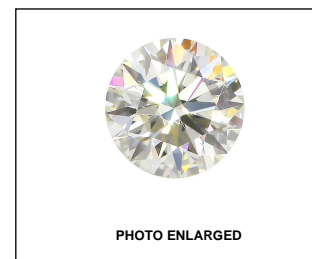
This Report is subject to the terms and conditions

© IGI 2000, edition 2019 all rights reserved.

GRADING SCALES

Table with 2 rows and 5 columns: COLOR GRADING SCALE (CL, NC, FT, VLT, LT) and CLARITY (10x) GRADING SCALE (FL, IF, VVS, VS, SI, I)

The laboratory grown diamond described in this Report (Report) has been graded, tested, analyzed, examined and/or inscribed by International Gemological Institute (I.G.I.).



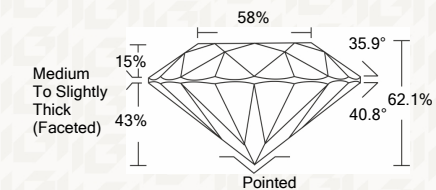
THE DOCUMENT WAS PRODUCED THE FOLLOWING SECURITY MEASURES: SPECIAL DOCUMENT BACKGROUND DESIGNS HOLOGRAM AND OTHER SECURITY FEATURES NOT LISTED AND DO NOT VIOLATE ANY INDUSTRY DUBLINES

IGI LABORATORY GROWN DIAMOND GRADING REPORT

02/24/2020 IGI Report Number LG407945525 Shape and Cutting Style ROUND BRILLIANT Measurements 7.46 - 7.53 X 4.65 MM

GRADING RESULTS

Carat Weight 1.63 CARAT Color Grade I Clarity Grade SI 2 Cut Grade IDEAL



ADDITIONAL GRADING INFORMATION

Polish EXCELLENT Symmetry EXCELLENT Fluorescence NONE Inscription(s) LABGROWN IGI LG407945525

Comments: This Laboratory grown diamond was created by chemical vapor deposition process (CVD) Type IIa



IGI



02/24/2020 IGI Report No. LG407945525 ROUND BRILLIANT 7.46 - 7.53 X 4.65 MM 1.63 CARAT I SI 2 IDEAL 62.1% 58% Medium To Slightly Thick (Faceted) Pointed EXCELLENT EXCELLENT NONE LABGROWN IGI LG407945525

Comments: This Laboratory grown diamond was created by chemical vapor deposition process (CVD) Type IIa