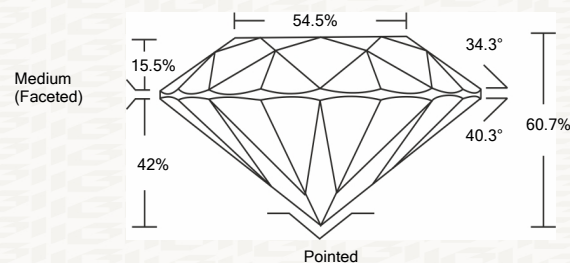




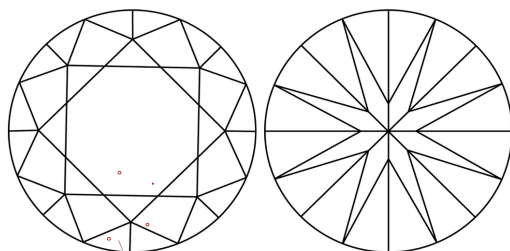
IGI GEMOLOGICAL REPORT

ADDITIONAL INFORMATION

PROPORTIONS



CLARITY CHARACTERISTICS



KEY TO SYMBOLS

Red symbols indicate internal characteristics. Green symbols indicate external characteristics.

This Report is subject to the terms and conditions

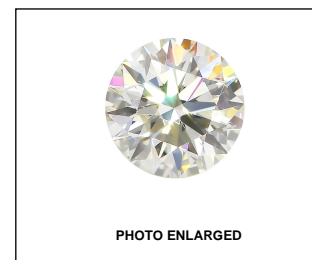
© IGI 2000, edition 2019 all rights reserved.

GRADING SCALES

Table with 2 rows and 5 columns showing grading scales for Color (CL) and Clarity (10x) across categories like CL, NC, FT, VLT, LT and FL, IF, VVS, VS, SI, I.

The laboratory grown diamond described in this Report (Report) has been graded, tested, analyzed, examined and/or inscribed by International Gemological Institute (IGI). A laboratory grown diamond is one that has essentially the same chemical, physical and optical properties as a mined diamond...

© INTERNATIONAL GEMOLOGICAL INSTITUTE, INC.



LASERSCRIBE SM



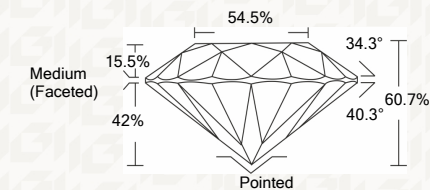
THE DOCUMENT WAS PRODUCED THE FOLLOWING SECURITY MEASURES: SPECIAL DOCUMENT BACKGROUND DESIGNS HOLOGRAM AND OTHER SECURITY FEATURES NOT LISTED AND DO NOT VIOLATE TRADEMARK OR PATENT RIGHTS BY ANY INDUSTRY DUPLICATES

IGI LABORATORY GROWN DIAMOND GRADING REPORT

02/19/2020 IGI Report Number LG407930519 Shape and Cutting Style ROUND BRILLIANT Measurements 7.76 - 7.79 X 4.72 MM

GRADING RESULTS

Carat Weight 1.73 CARAT Color Grade I Clarity Grade VS 1 Cut Grade IDEAL



ADDITIONAL GRADING INFORMATION

Polish EXCELLENT Symmetry EXCELLENT Fluorescence NONE Inscription(s) LABGROWN IGI LG407930519

Comments: This Laboratory grown diamond was created by chemical vapor deposition process (CVD) Type IIa



IGI

02/19/2020 IGI Report No. LG407930519 ROUND BRILLIANT 7.76 - 7.79 X 4.72 MM 1.73 CARAT I VS 1 IDEAL 60.7% 54.5% Medium (Faceted) Pointed EXCELLENT EXCELLENT NONE LABGROWN IGI LG407930519 Comments: This Laboratory grown diamond was created by chemical vapor deposition process (CVD) Type IIa

