



ELECTRONIC COPY

LABORATORY GROWN DIAMOND REPORT

September 26, 2019
 IGI Report Number **LG389976670**
 Description **LABORATORY GROWN
DIAMOND**
 Shape and Cutting Style **ROUND BRILLIANT**
 Measurements **6.84 - 6.87 X 4.17 MM**

GRADING RESULTS

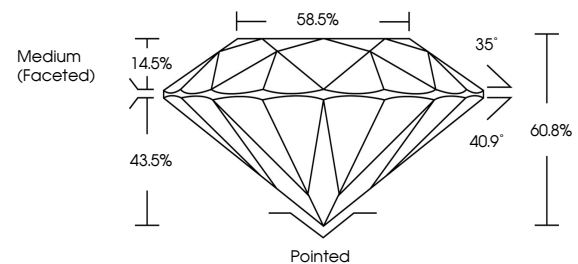
Carat Weight **1.20 CARAT**
 Color Grade **G**
 Clarity Grade **SI 1**
 Cut Grade **IDEAL**

ADDITIONAL GRADING INFORMATION

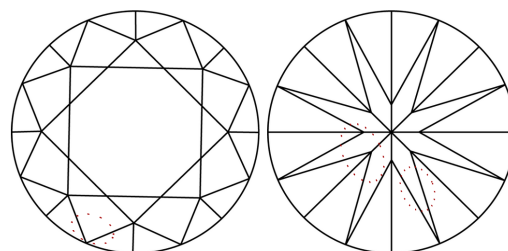
Polish **EXCELLENT**
 Symmetry **EXCELLENT**
 Fluorescence **NONE**
 Inscription(s) **LABGROWN IGI LG389976670**
 Comments: This Chemical Vapor Deposition (CVD) laboratory grown diamond is classified as Type IIa

LG389976670

PROPORTIONS



CLARITY CHARACTERISTICS



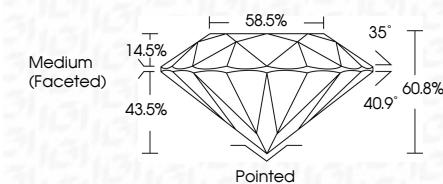
KEY TO SYMBOLS

Red symbols indicate internal characteristics.
 Green symbols indicate external characteristics.

GRADING SCALES

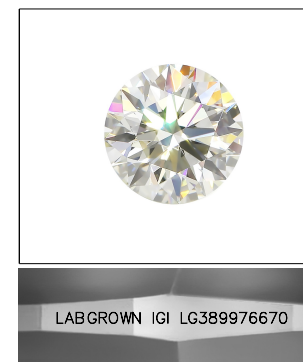
COLOR GRADING SCALE	CL	NC	FT	VLT	LT	
	COLORLESS D-F	NEAR COLORLESS G-J	FAINT K-M	VERY LIGHT N-R	LIGHT S-Z	
CLARITY (10x) GRADING SCALE	FL	IF	VVS	VS	SI	I
	FLAWLESS INTERNALLY FLAWLESS	VERY VERY SLIGHTLY INCLUDED	VERY SLIGHTLY INCLUDED	SLIGHTLY INCLUDED	INCLUDED	

September 26, 2019
 IGI Report Number **LG389976670**
 Description **LABORATORY GROWN
DIAMOND**
 Shape and Cutting Style **ROUND BRILLIANT**
 Measurements **6.84 - 6.87 X 4.17 MM**
GRADING RESULTS
 Carat Weight **1.20 CARAT**
 Color Grade **G**
 Clarity Grade **SI 1**
 Cut Grade **IDEAL**



ADDITIONAL GRADING INFORMATION

Polish **EXCELLENT**
 Symmetry **EXCELLENT**
 Fluorescence **NONE**
 Inscription(s) **LABGROWN IGI LG389976670**
 Comments: This Chemical Vapor Deposition (CVD) laboratory grown diamond is classified as Type IIa



LABGROWN IGI LG389976670

LASERSCRIBESM

Sample Image Used



IGI



September 26, 2019
 IGI Report No **LG389976670**
ROUND BRILLIANT
 6.84 - 6.87 X 4.17 MM
 Carat Weight **1.20 CARAT**
 Color Grade **G**
 Clarity Grade **SI 1**
 Cut Grade **IDEAL**
 Depth **43.5%**
 Table **14.5%**
 Girdle **58.5%**
 Medium (Faceted)
 Culet **Pointed**
 Polish **EXCELLENT**
 Symmetry **EXCELLENT**
 Fluorescence **NONE**
 Inscription(s) **LABGROWN IGI LG389976670**
 Comments: This Chemical Vapor Deposition (CVD) laboratory grown diamond is classified as Type IIa