



ELECTRONIC COPY

813663904
Report verification at igi.org



July 2, 2026
IGI Report Number **813663904**
Description **NATURAL DIAMOND**
Shape and Cutting Style **ROUND BRILLIANT**
Measurements **6.36 - 6.42 X 4.00 MM**
GRADING RESULTS
Carat Weight **1.00 CARAT**
Color Grade **M**
Clarity Grade **INTERNALLY FLAWLESS**
Cut Grade **EXCELLENT**

DIAMOND REPORT

July 2, 2026
IGI Report Number **813663904**
Description **NATURAL DIAMOND**
Shape and Cutting Style **ROUND BRILLIANT**
Measurements **6.36 - 6.42 X 4.00 MM**

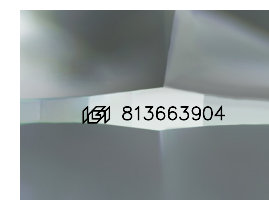
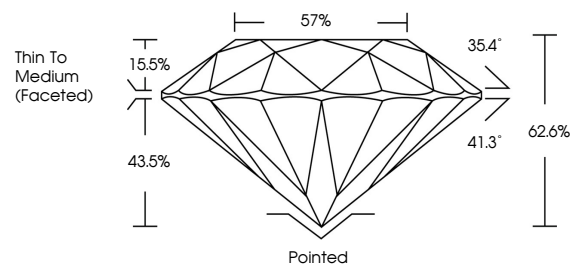
GRADING RESULTS

Carat Weight **1.00 CARAT**
Color Grade **M**
Clarity Grade **INTERNALLY FLAWLESS**
Cut Grade **EXCELLENT**

ADDITIONAL GRADING INFORMATION

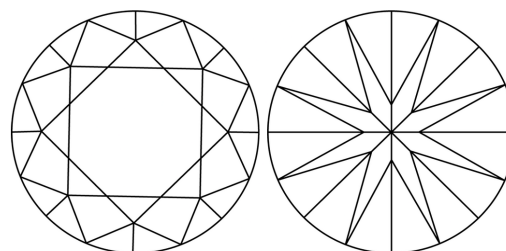
Polish **EXCELLENT**
Symmetry **EXCELLENT**
Fluorescence **STRONG**
Inscription(s) **813663904**
Comments: IDEAL CUT ROUND BRILLIANT

PROPORTIONS



Sample Image Used

CLARITY CHARACTERISTICS



KEY TO SYMBOLS

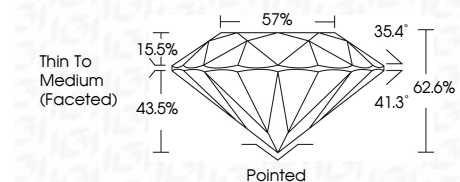
Red symbols indicate internal characteristics.
Green symbols indicate external characteristics.

COLOR

D - F	G - J	K - M	N - R	S - Z	FANCY
Colorless	Near Colorless	Slightly Tinted	Very Light Color	Light Color	

CLARITY

FL	IF	VVS ¹⁻²	VS ¹⁻²	SI ¹⁻²	I ¹⁻³
Flawless	Internally Flawless	Very Very Slightly Included	Very Slightly Included	Slightly Included	Included



ADDITIONAL GRADING INFORMATION

Polish **EXCELLENT**
Symmetry **EXCELLENT**
Fluorescence **STRONG**
Inscription(s) **813663904**
Comments: IDEAL CUT ROUND BRILLIANT



IGI



July 2, 2026
IGI Report No 813663904
ROUND BRILLIANT
6.36 - 6.42 X 4.00 MM
1.00 CARAT M
Color Grade EXCELLENT
Clarity Grade EXCELLENT
Depth 62.6%
Table 57%
Girdle Thin To Medium (Faceted)
Culet Pointed
Polish EXCELLENT
Symmetry EXCELLENT
Fluorescence STRONG
Inscription(s) 813663904
Comments: IDEAL CUT ROUND BRILLIANT