



**ELECTRONIC COPY**

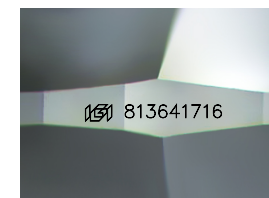
813641716  
Report verification at [igi.org](http://igi.org)



July 1, 2026  
IGI Report Number **813641716**  
Description **NATURAL DIAMOND**  
Shape and Cutting Style **ROUND BRILLIANT**  
Measurements **6.52 - 6.58 X 4.09 MM**

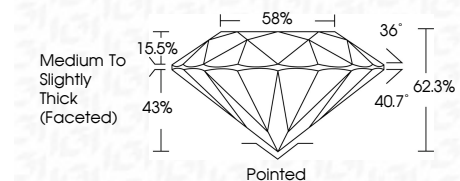
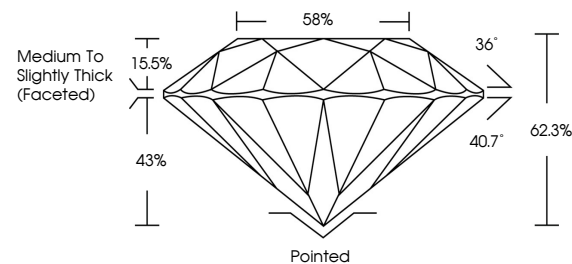
**GRADING RESULTS**

Carat Weight **1.10 CARAT**  
Color Grade **I**  
Clarity Grade **VS 1**  
Cut Grade **EXCELLENT**

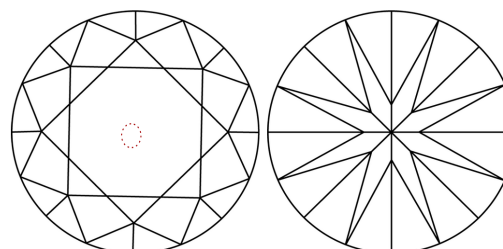


Sample Image Used

**PROPORTIONS**



**CLARITY CHARACTERISTICS**



**KEY TO SYMBOLS**

Red symbols indicate internal characteristics.  
Green symbols indicate external characteristics.

**COLOR**

D - F	G - J	K - M	N - R	S - Z	FANCY
Colorless	Near Colorless	Slightly Tinted	Very Light Color	Light Color	

**CLARITY**

FL	IF	VVS <sup>1-2</sup>	VS <sup>1-2</sup>	SI <sup>1-2</sup>	I <sup>1-3</sup>
Flawless	Internally Flawless	Very Very Slightly Included	Very Slightly Included	Slightly Included	Included

**ADDITIONAL GRADING INFORMATION**

Polish **EXCELLENT**  
Symmetry **EXCELLENT**  
Fluorescence **NONE**  
Inscription(s) **IGI 813641716**  
Comments: IDEAL CUT ROUND BRILLIANT

July 1, 2026  
IGI Report Number **813641716**  
Description **NATURAL DIAMOND**  
Shape and Cutting Style **ROUND BRILLIANT**  
Measurements **6.52 - 6.58 X 4.09 MM**

**GRADING RESULTS**

Carat Weight **1.10 CARAT**  
Color Grade **I**  
Clarity Grade **VS 1**  
Cut Grade **EXCELLENT**

**ADDITIONAL GRADING INFORMATION**

Polish **EXCELLENT**  
Symmetry **EXCELLENT**  
Fluorescence **NONE**  
Inscription(s) **IGI 813641716**  
Comments: IDEAL CUT ROUND BRILLIANT



**IGI**



July 1, 2026  
IGI Report No 813641716  
**ROUND BRILLIANT**  
6.52 - 6.58 X 4.09 MM  
1.10 CARAT  
I  
VS 1  
EXCELLENT  
62.3%  
58%  
Medium To Slightly Thick (Faceted)  
Pointed  
EXCELLENT  
EXCELLENT  
NONE  
IGI 813641716  
Comments: IDEAL CUT ROUND BRILLIANT