



ELECTRONIC COPY

811689332
Report verification at igi.org



June 24, 2026
IGI Report Number **811689332**
Description **NATURAL DIAMOND**
Shape and Cutting Style **ROUND BRILLIANT**
Measurements **6.46 - 6.53 X 4.07 MM**
GRADING RESULTS
Carat Weight **1.04 CARAT**
Color Grade **L**
Clarity Grade **INTERNALLY FLAWLESS**
Cut Grade **EXCELLENT**

June 24, 2026
IGI Report Number **811689332**
Description **NATURAL DIAMOND**
Shape and Cutting Style **ROUND BRILLIANT**
Measurements **6.46 - 6.53 X 4.07 MM**

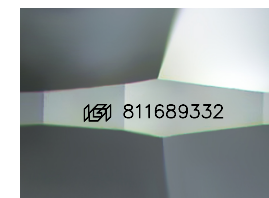
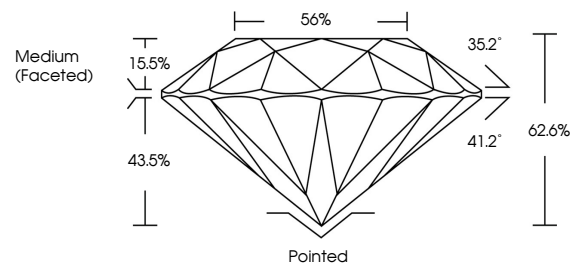
GRADING RESULTS

Carat Weight **1.04 CARAT**
Color Grade **L**
Clarity Grade **INTERNALLY FLAWLESS**
Cut Grade **EXCELLENT**

ADDITIONAL GRADING INFORMATION

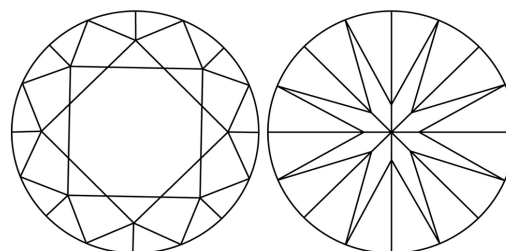
Polish **EXCELLENT**
Symmetry **EXCELLENT**
Fluorescence **SLIGHT**
Inscription(s) **811689332**

PROPORTIONS



Sample Image Used

CLARITY CHARACTERISTICS



KEY TO SYMBOLS

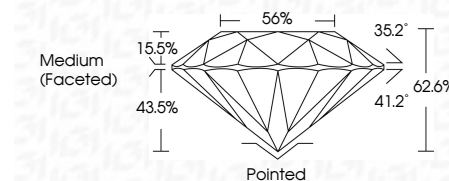
Red symbols indicate internal characteristics.
Green symbols indicate external characteristics.

COLOR

| D - F | G - J | K - M | N - R | S - Z | FANCY |
|-----------|----------------|-----------------|------------------|-------------|-------|
| Colorless | Near Colorless | Slightly Tinted | Very Light Color | Light Color | |

CLARITY

| FL | IF | VVS ¹⁻² | VS ¹⁻² | SI ¹⁻² | I ¹⁻³ |
|----------|---------------------|-----------------------------|------------------------|-------------------|------------------|
| Flawless | Internally Flawless | Very Very Slightly Included | Very Slightly Included | Slightly Included | Included |



ADDITIONAL GRADING INFORMATION

Polish **EXCELLENT**
Symmetry **EXCELLENT**
Fluorescence **SLIGHT**
Inscription(s) **811689332**



IGI



June 24, 2026
IGI Report No 811689332
ROUND BRILLIANT
6.46 - 6.53 X 4.07 MM
1.04 CARAT L
Color Grade EXCELLENT
Clarity Grade EXCELLENT
Depth 62.6%
Table 56%
Girdle Medium (Faceted)
Culet Pointed
Polish EXCELLENT
Symmetry EXCELLENT
Fluorescence SLIGHT
Inscription(s) 811689332