



**ELECTRONIC COPY**

810645904  
Report verification at [igi.org](http://igi.org)



June 22, 2026  
IGI Report Number **810645904**  
Description **NATURAL DIAMOND**  
Shape and Cutting Style **ROUND BRILLIANT**  
Measurements **6.78 - 6.83 X 4.19 MM**

**GRADING RESULTS**

Carat Weight **1.20 CARAT**  
Color Grade **I**  
Clarity Grade **VS 2**  
Cut Grade **EXCELLENT**

June 22, 2026  
IGI Report Number **810645904**  
Description **NATURAL DIAMOND**  
Shape and Cutting Style **ROUND BRILLIANT**  
Measurements **6.78 - 6.83 X 4.19 MM**

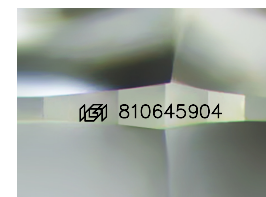
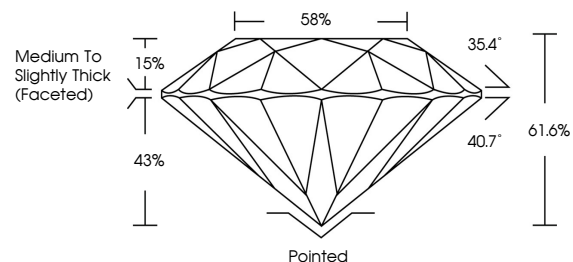
**GRADING RESULTS**

Carat Weight **1.20 CARAT**  
Color Grade **I**  
Clarity Grade **VS 2**  
Cut Grade **EXCELLENT**

**ADDITIONAL GRADING INFORMATION**

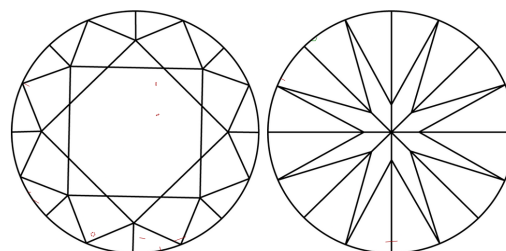
Polish **EXCELLENT**  
Symmetry **EXCELLENT**  
Fluorescence **NONE**  
Inscription(s) **810645904**  
Comments: IDEAL CUT ROUND BRILLIANT

**PROPORTIONS**



Sample Image Used

**CLARITY CHARACTERISTICS**



**KEY TO SYMBOLS**

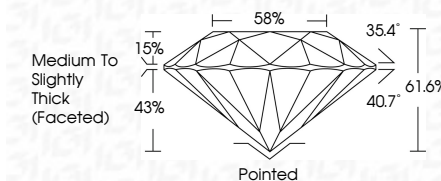
Red symbols indicate internal characteristics.  
Green symbols indicate external characteristics.

**COLOR**

D - F	G - J	K - M	N - R	S - Z	FANCY
Colorless	Near Colorless	Slightly Tinted	Very Light Color	Light Color	

**CLARITY**

FL	IF	VVS 1-2	VS 1-2	SI 1-2	I 1-3
Flawless	Internally Flawless	Very Very Slightly Included	Very Slightly Included	Slightly Included	Included



**ADDITIONAL GRADING INFORMATION**

Polish **EXCELLENT**  
Symmetry **EXCELLENT**  
Fluorescence **NONE**  
Inscription(s) **810645904**  
Comments: IDEAL CUT ROUND BRILLIANT



**IGI**



June 22, 2026  
IGI Report No 810645904  
ROUND BRILLIANT  
6.78 - 6.83 X 4.19 MM  
1.20 CARAT  
I  
EXCELLENT  
VS 2  
61.6%  
58%  
Medium To Slightly Thick (Faceted)  
Pointed  
EXCELLENT  
EXCELLENT  
NONE  
810645904  
Comments: IDEAL CUT ROUND BRILLIANT