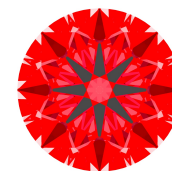
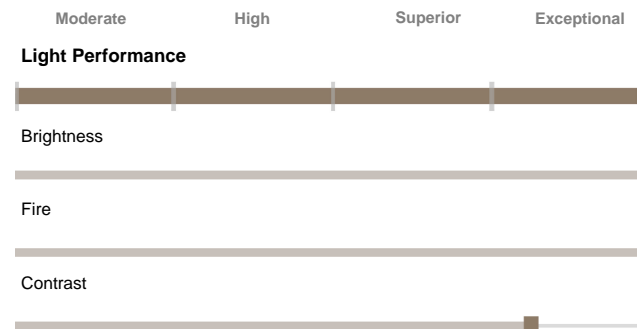




Light Performance Grade: Exceptional



Structured Light Environment Representation



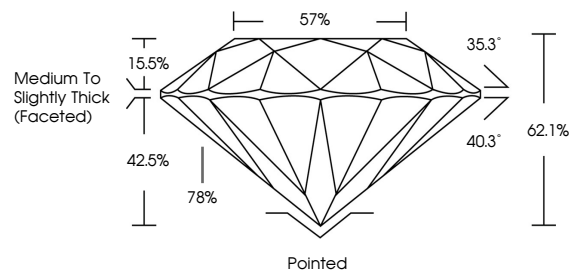
COLOR

D - F	G - J	K - M	N - R	S - Z	FANCY
Colorless	Near Colorless	Slightly Tinted	Very Light Color	Light Color	

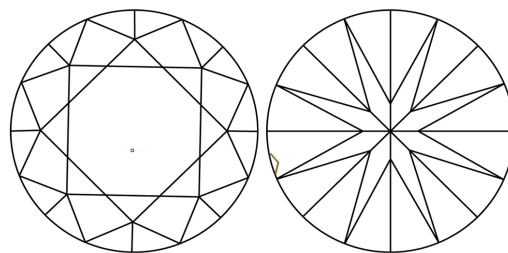
CLARITY

FL	IF	VVS 1-2	VS 1-2	SI 1-2	I 1-3
Flawless	Internally Flawless	Very Very Slightly Included	Very Slightly Included	Slightly Included	Included

PROPORTIONS

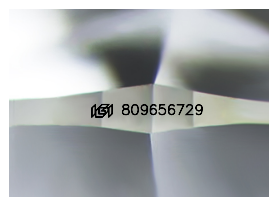


CLARITY CHARACTERISTICS



KEY TO SYMBOLS

Red symbols indicate internal characteristics.
Green symbols indicate external characteristics.



Sample Image Used



June 22, 2026

IGI Report Number **809656729**

Description **NATURAL DIAMOND**

Shape and Cutting Style **ROUND BRILLIANT**

Measurements **9.13 - 9.21 X 5.70 MM**

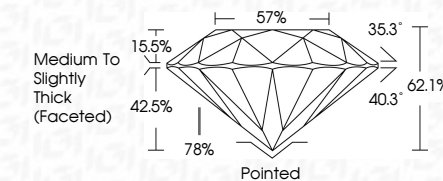
GRADING RESULTS

Carat Weight **3.01 CARATS**

Color Grade **I**

Clarity Grade **VS 1**

Cut Grade **EXCELLENT**



ADDITIONAL GRADING INFORMATION

Polish **EXCELLENT**

Symmetry **EXCELLENT**

Fluorescence **SLIGHT**

Inscription(s) **IGI 809656729**



IGI

June 22, 2026
IGI Report No 809656729
ROUND BRILLIANT

9.13 - 9.21 X 5.70 MM

Carat Weight 3.01 CARATS

Color Grade I

Clarity Grade VS 1

Cut Grade EXCELLENT

Depth 62.1%

Table 57%

Girdle Medium To Slightly Thick (Faceted)

Culet Pointed

Polish EXCELLENT

Symmetry EXCELLENT

Fluorescence SLIGHT

Inscription(s) IGI 809656729