



ELECTRONIC COPY

809656728
Report verification at igi.org



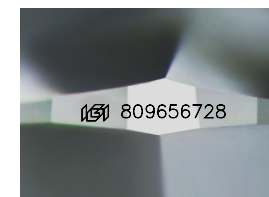
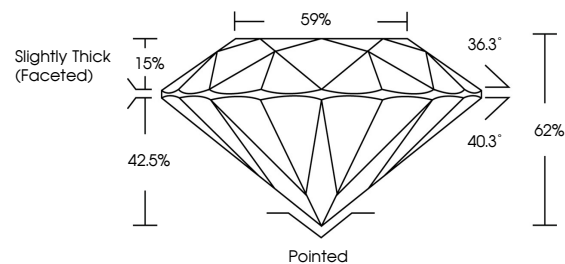
June 22, 2026
IGI Report Number **809656728**
Description **NATURAL DIAMOND**
Shape and Cutting Style **ROUND BRILLIANT**
Measurements **7.53 - 7.61 X 4.71 MM**
GRADING RESULTS
Carat Weight **1.73 CARAT**
Color Grade **I**
Clarity Grade **INTERNALLY FLAWLESS**
Cut Grade **EXCELLENT**

June 22, 2026
IGI Report Number **809656728**
Description **NATURAL DIAMOND**
Shape and Cutting Style **ROUND BRILLIANT**
Measurements **7.53 - 7.61 X 4.71 MM**

GRADING RESULTS
Carat Weight **1.73 CARAT**
Color Grade **I**
Clarity Grade **INTERNALLY FLAWLESS**
Cut Grade **EXCELLENT**

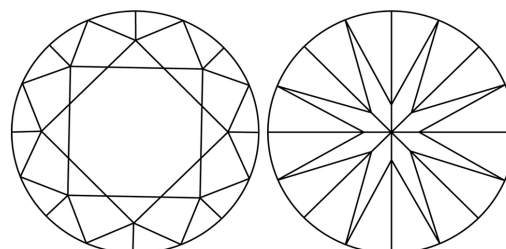
ADDITIONAL GRADING INFORMATION
Polish **EXCELLENT**
Symmetry **EXCELLENT**
Fluorescence **NONE**
Inscription(s) **809656728**

PROPORTIONS



Sample Image Used

CLARITY CHARACTERISTICS



KEY TO SYMBOLS

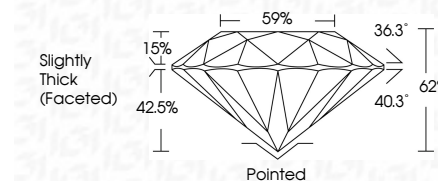
Red symbols indicate internal characteristics.
Green symbols indicate external characteristics.

COLOR

D - F	G - J	K - M	N - R	S - Z	FANCY
Colorless	Near Colorless	Slightly Tinted	Very Light Color	Light Color	

CLARITY

FL	IF	VVS ¹⁻²	VS ¹⁻²	SI ¹⁻²	I ¹⁻³
Flawless	Internally Flawless	Very Very Slightly Included	Very Slightly Included	Slightly Included	Included



ADDITIONAL GRADING INFORMATION

Polish **EXCELLENT**
Symmetry **EXCELLENT**
Fluorescence **NONE**
Inscription(s) **809656728**



IGI



June 22, 2026
IGI Report No. 809656728
ROUND BRILLIANT
7.53 - 7.61 X 4.71 MM
1.73 CARAT
Color Grade **I**
Clarity Grade **IF**
Depth **62%**
Table **59%**
Girdle **Slightly Thick (Faceted)**
Culet **Pointed**
Polish **EXCELLENT**
Symmetry **EXCELLENT**
Fluorescence **NONE**
Inscriptions(s) **809656728**