



Light Performance Grade: Exceptional



June 17, 2026
IGI Report Number **809656667**
Description **NATURAL DIAMOND**
Shape and Cutting Style **ROUND BRILLIANT**
Measurements **7.93 - 8.01 X 4.99 MM**
GRADING RESULTS
Carat Weight **2.01 CARATS**
Color Grade **J**
Clarity Grade **INTERNALLY FLAWLESS**
Cut Grade **EXCELLENT**

**ELECTRONIC COPY
DIAMOND REPORT**

June 17, 2026
IGI Report Number **809656667**
Description **NATURAL DIAMOND**
Shape and Cutting Style **ROUND BRILLIANT**
Measurements **7.93 - 8.01 x 4.99 mm**

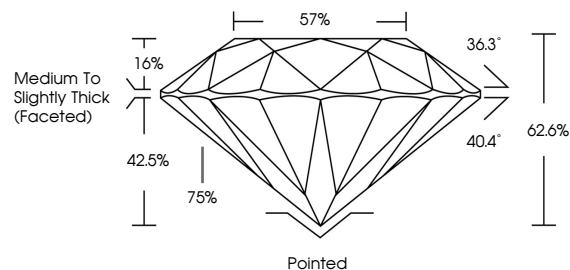
GRADING RESULTS

Carat Weight **2.01 CARATS**
Color Grade **J**
Clarity Grade **INTERNALLY FLAWLESS**
Cut Grade **EXCELLENT**

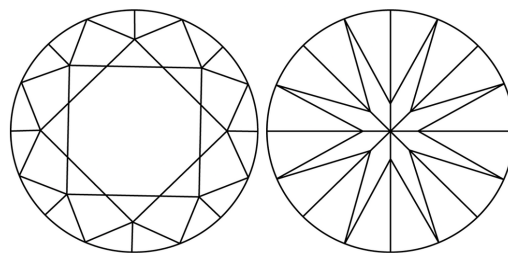
ADDITIONAL GRADING INFORMATION

Polish **EXCELLENT**
Symmetry **EXCELLENT**
Fluorescence **VERY SLIGHT**
Inscription(s) **IGI 809656667**

PROPORTIONS

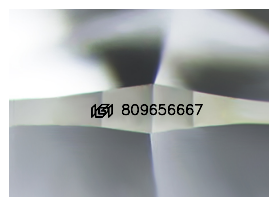


CLARITY CHARACTERISTICS

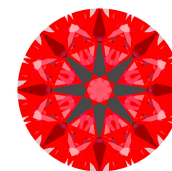


KEY TO SYMBOLS

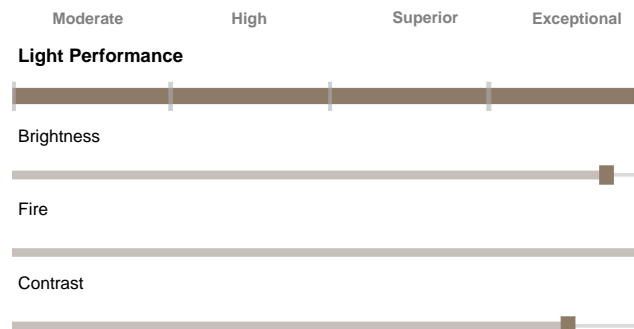
Red symbols indicate internal characteristics.
Green symbols indicate external characteristics.



Sample Image Used



Structured Light Environment Representation

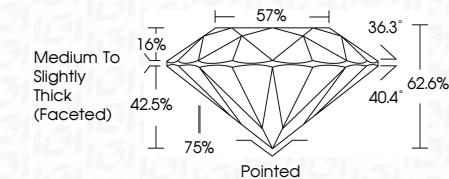


COLOR

D - F	G - J	K - M	N - R	S - Z	FANCY
Colorless	Near Colorless	Slightly Tinted	Very Light Color	Light Color	

CLARITY

FL	IF	VS 1-2	VS 1-2	SI 1-2	I 1-3
Flawless	Internally Flawless	Very Very Slightly Included	Very Slightly Included	Slightly Included	Included



ADDITIONAL GRADING INFORMATION

Polish **EXCELLENT**
Symmetry **EXCELLENT**
Fluorescence **VERY SLIGHT**
Inscription(s) **IGI 809656667**



IGI

June 17, 2026
IGI Report No **809656667**
ROUND BRILLIANT
Carat Weight **2.01 CARATS**
Color Grade **J**
Clarity Grade **IF**
Depth **EXCELLENT**
Table **62.6%**
Girdle **Medium To Slightly Thick (Faceted)**
Culet **Pointed**
Polish **EXCELLENT**
Symmetry **EXCELLENT**
Fluorescence **VERY SLIGHT**
Inscription(s) **IGI 809656667**

