



**ELECTRONIC COPY**

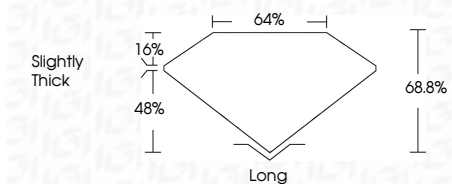
809643090  
Report verification at [igi.org](http://igi.org)



June 16, 2026  
IGI Report Number **809643090**  
Description **NATURAL DIAMOND**  
Shape and Cutting Style **EMERALD CUT**  
Measurements **6.46 X 4.75 X 3.27 MM**

**GRADING RESULTS**

Carat Weight **1.02 CARAT**  
Color Grade **G**  
Clarity Grade **VS 2**  
Cut Grade **VERY GOOD**



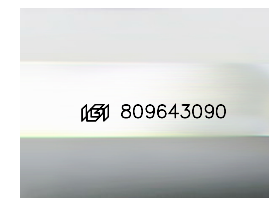
**ADDITIONAL GRADING INFORMATION**

Polish **EXCELLENT**  
Symmetry **EXCELLENT**  
Fluorescence **NONE**  
Inscription(s) **IGI 809643090**



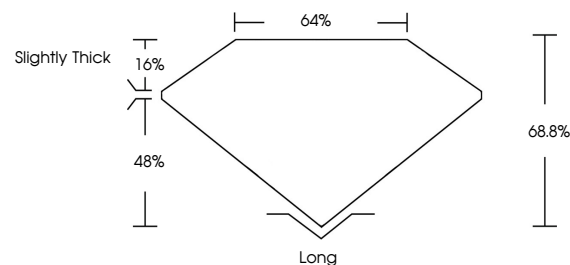
**IGI**

June 16, 2026  
IGI Report No. 809643090  
**EMERALD CUT**  
6.46 X 4.75 X 3.27 MM  
Carat Weight **1.02 CARAT**  
Color Grade **G**  
Clarity Grade **VS 2**  
Cut Grade **VERY GOOD**  
Depth **68.8%**  
Table **64%**  
Girdle **Slightly Thick**  
Culet **None**  
Polish **EXCELLENT**  
Symmetry **EXCELLENT**  
Fluorescence **NONE**  
Inscription(s) **IGI 809643090**

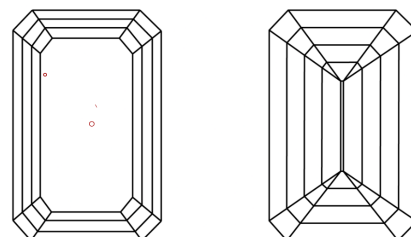


Sample Image Used

**PROPORTIONS**



**CLARITY CHARACTERISTICS**



**KEY TO SYMBOLS**

Red symbols indicate internal characteristics.  
Green symbols indicate external characteristics.

**COLOR**

D - F	G - J	K - M	N - R	S - Z	FANCY
Colorless	Near Colorless	Slightly Tinted	Very Light Color	Light Color	

**CLARITY**

FL	IF	VVS 1-2	VS 1-2	SI 1-2	I 1-3
Flawless	Internally Flawless	Very Very Slightly Included	Very Slightly Included	Slightly Included	Included

