



**ELECTRONIC COPY**

809643089  
Report verification at [igi.org](http://igi.org)



June 16, 2026  
IGI Report Number **809643089**  
Description **NATURAL DIAMOND**  
Shape and Cutting Style **PRINCESS CUT**  
Measurements **5.28 X 5.24 X 3.93 MM**  
**GRADING RESULTS**  
Carat Weight **1.00 CARAT**  
Color Grade **H**  
Clarity Grade **VVS 2**  
Cut Grade **VERY GOOD**

**DIAMOND REPORT**

June 16, 2026  
IGI Report Number **809643089**  
Description **NATURAL DIAMOND**  
Shape and Cutting Style **PRINCESS CUT**  
Measurements **5.28 X 5.24 X 3.93 MM**

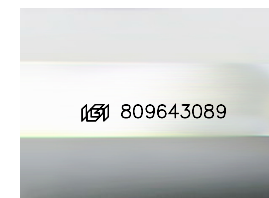
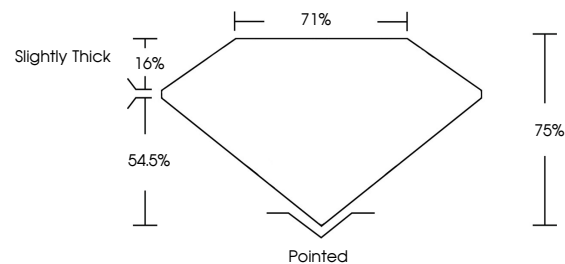
**GRADING RESULTS**

Carat Weight **1.00 CARAT**  
Color Grade **H**  
Clarity Grade **VVS 2**  
Cut Grade **VERY GOOD**

**ADDITIONAL GRADING INFORMATION**

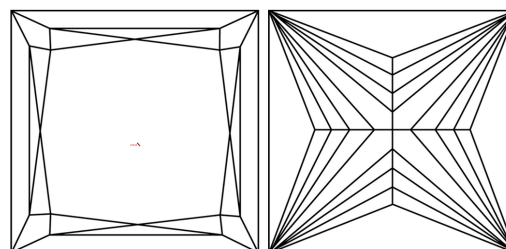
Polish **EXCELLENT**  
Symmetry **EXCELLENT**  
Fluorescence **NONE**  
Inscription(s) **809643089**

**PROPORTIONS**



Sample Image Used

**CLARITY CHARACTERISTICS**



**KEY TO SYMBOLS**

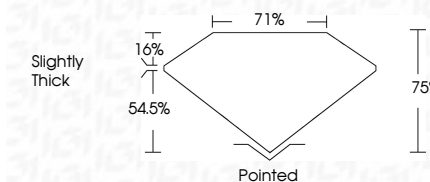
Red symbols indicate internal characteristics.  
Green symbols indicate external characteristics.

**COLOR**

D - F	G - J	K - M	N - R	S - Z	FANCY
Colorless	Near Colorless	Slightly Tinted	Very Light Color	Light Color	

**CLARITY**

FL	IF	VVS <sup>1-2</sup>	VS <sup>1-2</sup>	SI <sup>1-2</sup>	I <sup>1-3</sup>
Flawless	Internally Flawless	Very Very Slightly Included	Very Slightly Included	Slightly Included	Included



**ADDITIONAL GRADING INFORMATION**

Polish **EXCELLENT**  
Symmetry **EXCELLENT**  
Fluorescence **NONE**  
Inscription(s) **809643089**



**IGI**



June 16, 2026  
IGI Report No. 809643089  
**PRINCESS CUT**  
5.28 X 5.24 X 3.93 MM  
1.00 CARAT  
H  
VVS 2  
VERY GOOD  
75%  
71%  
Slightly Thick  
Pointed  
EXCELLENT  
EXCELLENT  
NONE  
809643089