



ELECTRONIC COPY

809605695
Report verification at igi.org



June 12, 2026
IGI Report Number **809605695**
Description **NATURAL DIAMOND**
Shape and Cutting Style **SQUARE EMERALD CUT**
Measurements **5.40 X 5.21 X 3.64 MM**
GRADING RESULTS
Carat Weight **1.01 CARAT**
Color Grade **G**
Clarity Grade **INTERNALLY FLAWLESS**
Cut Grade **VERY GOOD**

DIAMOND REPORT

June 12, 2026
IGI Report Number **809605695**
Description **NATURAL DIAMOND**
Shape and Cutting Style **SQUARE EMERALD CUT**
Measurements **5.40 X 5.21 X 3.64 MM**

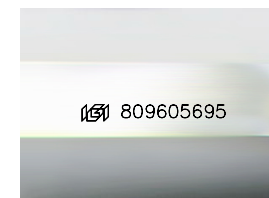
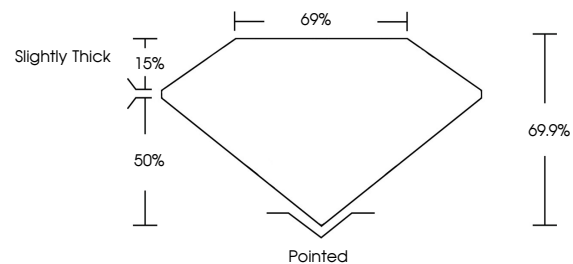
GRADING RESULTS

Carat Weight **1.01 CARAT**
Color Grade **G**
Clarity Grade **INTERNALLY FLAWLESS**
Cut Grade **VERY GOOD**

ADDITIONAL GRADING INFORMATION

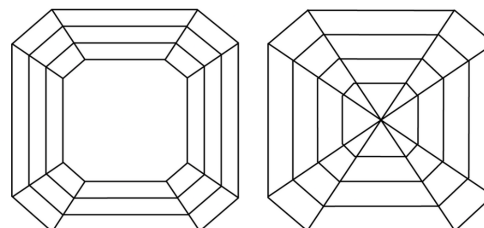
Polish **EXCELLENT**
Symmetry **EXCELLENT**
Fluorescence **NONE**
Inscription(s) **809605695**

PROPORTIONS



Sample Image Used

CLARITY CHARACTERISTICS



KEY TO SYMBOLS

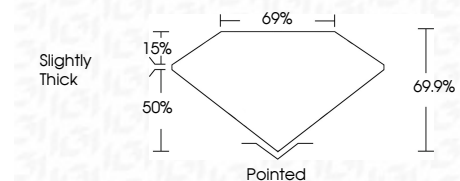
Red symbols indicate internal characteristics.
Green symbols indicate external characteristics.

COLOR

D - F	G - J	K - M	N - R	S - Z	FANCY
Colorless	Near Colorless	Slightly Tinted	Very Light Color	Light Color	

CLARITY

FL	IF	VVS ¹⁻²	VS ¹⁻²	SI ¹⁻²	I ¹⁻³
Flawless	Internally Flawless	Very Very Slightly Included	Very Slightly Included	Slightly Included	Included



ADDITIONAL GRADING INFORMATION

Polish **EXCELLENT**
Symmetry **EXCELLENT**
Fluorescence **NONE**
Inscription(s) **809605695**



IGI



June 12, 2026
IGI Report No. **809605695**
SQUARE EMERALD CUT
5.40 X 5.21 X 3.64 MM
1.01 CARAT
Color Grade **G**
Clarity Grade **IF**
Depth **61%**
Table **69%**
Girdle **Slightly Thick**
Culet **Pointed**
Polish **EXCELLENT**
Symmetry **EXCELLENT**
Fluorescence **NONE**
Inscription(s) **809605695**