



**ELECTRONIC COPY**

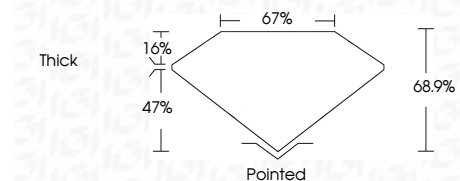
809605691  
Report verification at [igi.org](http://igi.org)



June 12, 2026  
IGI Report Number **809605691**  
Description **NATURAL DIAMOND**  
Shape and Cutting Style **SQUARE EMERALD CUT**  
Measurements **5.43 X 5.31 X 3.66 MM**

**GRADING RESULTS**

Carat Weight **1.01 CARAT**  
Color Grade **H**  
Clarity Grade **VS 1**  
Cut Grade **VERY GOOD**



**ADDITIONAL GRADING INFORMATION**

Polish **EXCELLENT**  
Symmetry **EXCELLENT**  
Fluorescence **NONE**  
Inscription(s) **IGI 809605691**



**IGI**

June 12, 2026  
IGI Report No. 809605691  
**SQUARE EMERALD CUT**  
5.43 X 5.31 X 3.66 MM  
1.01 CARAT H  
Color Grade VS 1  
Clarity Grade VERY GOOD  
Depth 68.9%  
Table 67%  
Girdle Thick  
Culet Pointed  
Polish EXCELLENT  
Symmetry EXCELLENT  
Fluorescence NONE  
Inscriptions(s) IGI 809605691

**DIAMOND REPORT**

June 12, 2026  
IGI Report Number **809605691**  
Description **NATURAL DIAMOND**  
Shape and Cutting Style **SQUARE EMERALD CUT**  
Measurements **5.43 X 5.31 X 3.66 MM**

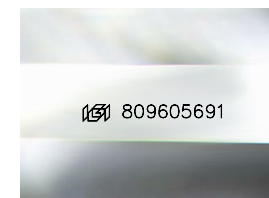
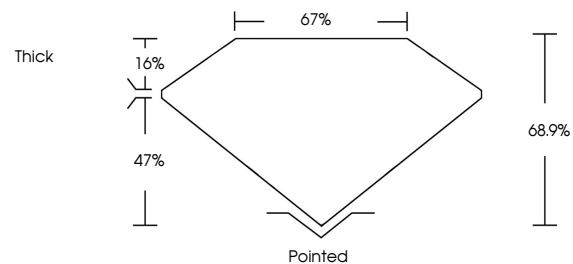
**GRADING RESULTS**

Carat Weight **1.01 CARAT**  
Color Grade **H**  
Clarity Grade **VS 1**  
Cut Grade **VERY GOOD**

**ADDITIONAL GRADING INFORMATION**

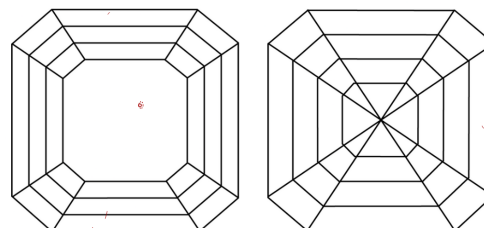
Polish **EXCELLENT**  
Symmetry **EXCELLENT**  
Fluorescence **NONE**  
Inscription(s) **IGI 809605691**

**PROPORTIONS**



Sample Image Used

**CLARITY CHARACTERISTICS**



**KEY TO SYMBOLS**

Red symbols indicate internal characteristics.  
Green symbols indicate external characteristics.

**COLOR**

D - F	G - J	K - M	N - R	S - Z	FANCY
Colorless	Near Colorless	Slightly Tinted	Very Light Color	Light Color	

**CLARITY**

FL	IF	VVS <sup>1-2</sup>	VS <sup>1-2</sup>	SI <sup>1-2</sup>	I <sup>1-3</sup>
Flawless	Internally Flawless	Very Very Slightly Included	Very Slightly Included	Slightly Included	Included

