



ELECTRONIC COPY

807632246
Report verification at igi.org



June 17, 2026

IGI Report Number **807632246**

Description **NATURAL DIAMOND**

Shape and Cutting Style **CUSHION MODIFIED BRILLIANT**

Measurements **6.91 X 4.89 X 3.26 MM**

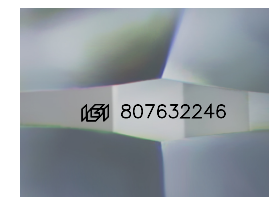
GRADING RESULTS

Carat Weight **1.00 CARAT**

Color Grade **I**

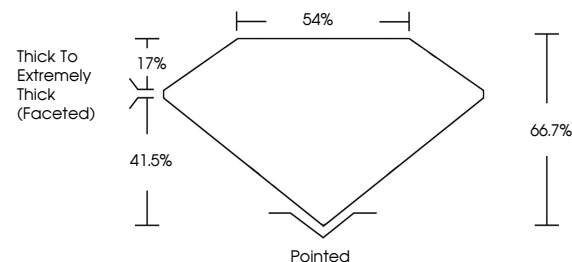
Clarity Grade **SI 1**

Cut Grade **GOOD**

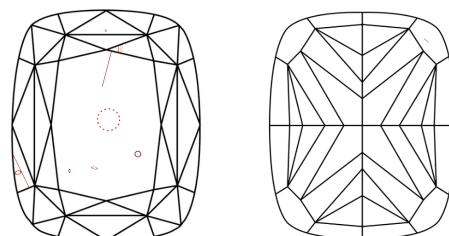


Sample Image Used

PROPORTIONS



CLARITY CHARACTERISTICS



KEY TO SYMBOLS

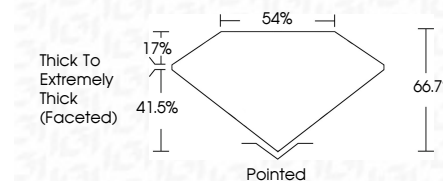
Red symbols indicate internal characteristics.
Green symbols indicate external characteristics.

COLOR

D - F	G - J	K - M	N - R	S - Z	FANCY
Colorless	Near Colorless	Slightly Tinted	Very Light Color	Light Color	

CLARITY

FL	IF	VVS ¹⁻²	VS ¹⁻²	SI ¹⁻²	I ¹⁻³
Flawless	Internally Flawless	Very Very Slightly Included	Very Slightly Included	Slightly Included	Included



ADDITIONAL GRADING INFORMATION

Polish **VERY GOOD**

Symmetry **VERY GOOD**

Fluorescence **NONE**

Inscription(s) **(IGI) 807632246**



IGI



June 17, 2026
IGI Report No. 807632246
CUSHION MODIFIED BRILLIANT

Carat Weight	1.00 CARAT
Color Grade	I
Clarity Grade	SI 1
Cut Grade	GOOD
Depth	66.7%
Table	54%
Girdle	Thick To Extremely Thick (Faceted)
Culet	Pointed
Polish	VERY GOOD
Symmetry	VERY GOOD
Fluorescence	NONE
Inscription(s)	(IGI) 807632246