



ELECTRONIC COPY

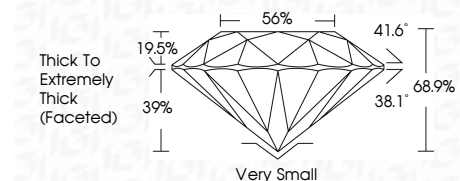
807624156
Report verification at igi.org



July 3, 2026
IGI Report Number **807624156**
Description **NATURAL DIAMOND**
Shape and Cutting Style **ROUND BRILLIANT**
Measurements **5.73 - 5.94 X 4.06 MM**

GRADING RESULTS

Carat Weight **1.00 CARAT**
Color Grade **I**
Clarity Grade **VVS 1**
Cut Grade **FAIR**

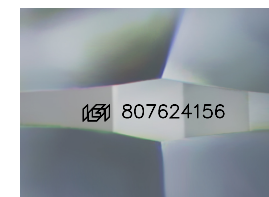


ADDITIONAL GRADING INFORMATION

Polish **EXCELLENT**
Symmetry **GOOD**
Fluorescence **NONE**
Inscription(s) **IGI 807624156**

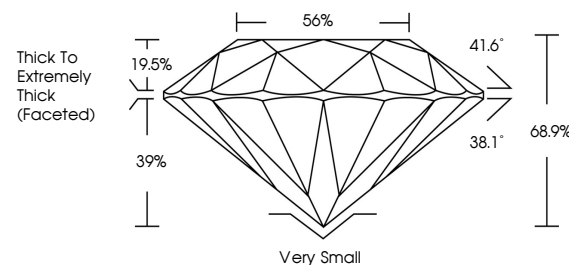


July 3, 2026
IGI Report No. 807624156
ROUND BRILLIANT
Carat Weight **1.00 CARAT**
Color Grade **I**
Clarity Grade **VVS 1**
Depth **68.9%**
Table **56%**
Girdle **Thick To Extremely Thick (Faceted)**
Culet **Very Small**
Polish **EXCELLENT**
Symmetry **GOOD**
Fluorescence **NONE**
Inscriptions(s) **IGI 807624156**

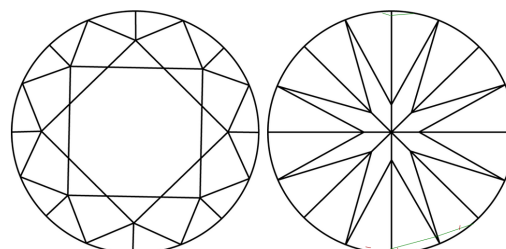


Sample Image Used

PROPORTIONS



CLARITY CHARACTERISTICS



KEY TO SYMBOLS

Red symbols indicate internal characteristics.
Green symbols indicate external characteristics.

COLOR

D - F	G - J	K - M	N - R	S - Z	FANCY
Colorless	Near Colorless	Slightly Tinted	Very Light Color	Light Color	

CLARITY

FL	IF	VVS ¹⁻²	VS ¹⁻²	SI ¹⁻²	I ¹⁻³
Flawless	Internally Flawless	Very Very Slightly Included	Very Slightly Included	Slightly Included	Included

