



ELECTRONIC COPY

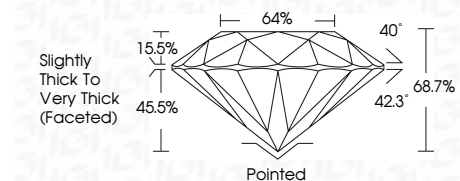
807624037
Report verification at igi.org



June 24, 2026
IGI Report Number **807624037**
Description **NATURAL DIAMOND**
Shape and Cutting Style **ROUND BRILLIANT**
Measurements **5.94 - 6.06 X 4.13 MM**

GRADING RESULTS

Carat Weight **1.00 CARAT**
Color Grade **K**
Clarity Grade **VS 1**
Cut Grade **GOOD**



ADDITIONAL GRADING INFORMATION

Polish **EXCELLENT**
Symmetry **VERY GOOD**
Fluorescence **VERY SLIGHT**
Inscription(s) **IGI 807624037**



IGI

June 24, 2026
IGI Report No. 807624037
ROUND BRILLIANT
5.94 - 6.06 X 4.13 MM
1.00 CARAT
K
VS 1
GOOD
68.7%
64%
Slightly Thick to Very Thick (Faceted)
Pointed
EXCELLENT
VERY GOOD
VERY SLIGHT
IGI 807624037

DIAMOND REPORT

June 24, 2026
IGI Report Number **807624037**
Description **NATURAL DIAMOND**
Shape and Cutting Style **ROUND BRILLIANT**
Measurements **5.94 - 6.06 X 4.13 MM**

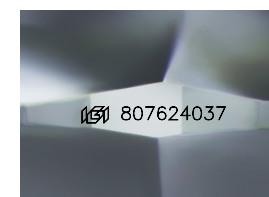
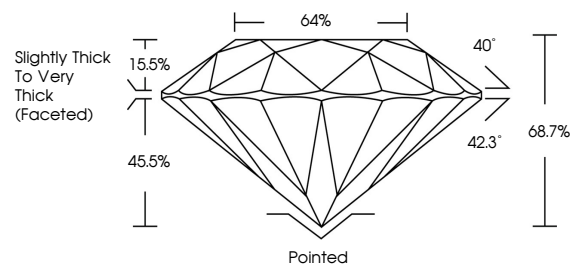
GRADING RESULTS

Carat Weight **1.00 CARAT**
Color Grade **K**
Clarity Grade **VS 1**
Cut Grade **GOOD**

ADDITIONAL GRADING INFORMATION

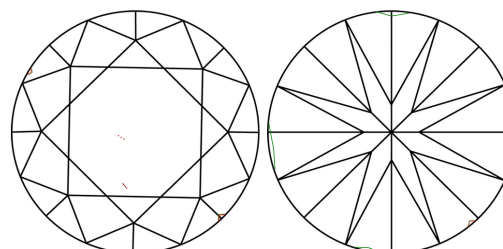
Polish **EXCELLENT**
Symmetry **VERY GOOD**
Fluorescence **VERY SLIGHT**
Inscription(s) **IGI 807624037**

PROPORTIONS



Sample Image Used

CLARITY CHARACTERISTICS



KEY TO SYMBOLS

Red symbols indicate internal characteristics.
Green symbols indicate external characteristics.

COLOR

| D - F | G - J | K - M | N - R | S - Z | FANCY |
|-----------|----------------|-----------------|------------------|-------------|-------|
| Colorless | Near Colorless | Slightly Tinted | Very Light Color | Light Color | |

CLARITY

| FL | IF | VVS 1-2 | VS 1-2 | SI 1-2 | I 1-3 |
|----------|---------------------|-----------------------------|------------------------|-------------------|----------|
| Flawless | Internally Flawless | Very Very Slightly Included | Very Slightly Included | Slightly Included | Included |

