



ELECTRONIC COPY

805659333
Report verification at igi.org



June 4, 2026
IGI Report Number **805659333**
Description **NATURAL DIAMOND**
Shape and Cutting Style **ROUND BRILLIANT**
Measurements **6.60 - 6.63 X 4.10 MM**
GRADING RESULTS
Carat Weight **1.11 CARAT**
Color Grade **H**
Clarity Grade **INTERNALLY FLAWLESS**
Cut Grade **EXCELLENT**

June 4, 2026
IGI Report Number **805659333**
Description **NATURAL DIAMOND**
Shape and Cutting Style **ROUND BRILLIANT**
Measurements **6.60 - 6.63 X 4.10 MM**

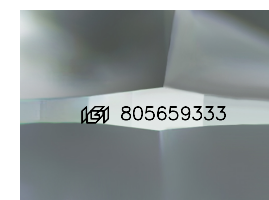
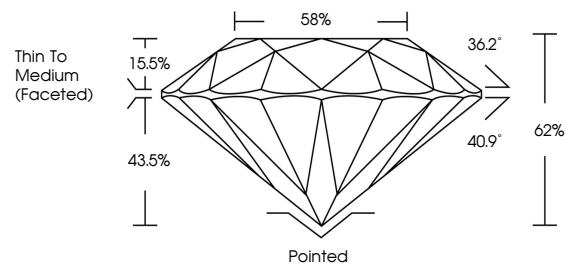
GRADING RESULTS

Carat Weight **1.11 CARAT**
Color Grade **H**
Clarity Grade **INTERNALLY FLAWLESS**
Cut Grade **EXCELLENT**

ADDITIONAL GRADING INFORMATION

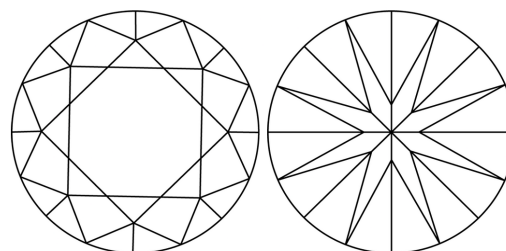
Polish **EXCELLENT**
Symmetry **EXCELLENT**
Fluorescence **NONE**
Inscription(s) **805659333**
Comments: IDEAL CUT ROUND BRILLIANT

PROPORTIONS



Sample Image Used

CLARITY CHARACTERISTICS



KEY TO SYMBOLS

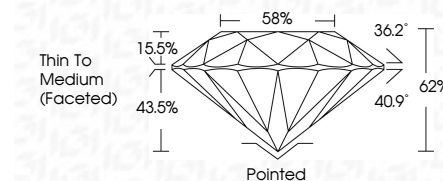
Red symbols indicate internal characteristics.
Green symbols indicate external characteristics.

COLOR

D - F	G - J	K - M	N - R	S - Z	FANCY
Colorless	Near Colorless	Slightly Tinted	Very Light Color	Light Color	

CLARITY

FL	IF	VVS ¹⁻²	VS ¹⁻²	SI ¹⁻²	I ¹⁻³
Flawless	Internally Flawless	Very Very Slightly Included	Very Slightly Included	Slightly Included	Included



ADDITIONAL GRADING INFORMATION

Polish **EXCELLENT**
Symmetry **EXCELLENT**
Fluorescence **NONE**
Inscription(s) **805659333**
Comments: IDEAL CUT ROUND BRILLIANT



IGI



June 4, 2026
IGI Report No. 805659333
ROUND BRILLIANT
6.60 - 6.63 X 4.10 MM
1.11 CARAT
H
EXCELLENT
EXCELLENT
EXCELLENT
NONE
805659333
Thin To Medium (Faceted)
Pointed
EXCELLENT
EXCELLENT
NONE
805659333
Comments: IDEAL CUT ROUND BRILLIANT