



**ELECTRONIC COPY**

803681856  
Report verification at [igi.org](http://igi.org)



May 29, 2026  
IGI Report Number **803681856**  
Description **NATURAL DIAMOND**  
Shape and Cutting Style **CUT CORNERED  
RECTANGULAR MODIFIED  
BRILLIANT**  
Measurements **6.37 X 4.99 X 3.57 MM**  
**GRADING RESULTS**  
Carat Weight **1.00 CARAT**  
Color Grade **J**  
Clarity Grade **VS 1**  
Cut Grade **VERY GOOD**

**DIAMOND REPORT**

May 29, 2026  
IGI Report Number **803681856**  
Description **NATURAL DIAMOND**  
Shape and Cutting Style **CUT CORNERED RECTANGULAR  
MODIFIED BRILLIANT**  
Measurements **6.37 X 4.99 X 3.57 MM**

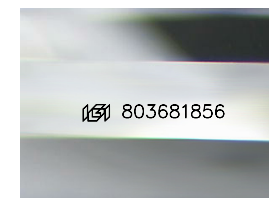
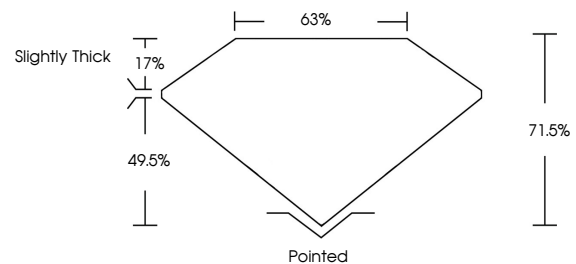
**GRADING RESULTS**

Carat Weight **1.00 CARAT**  
Color Grade **J**  
Clarity Grade **VS 1**  
Cut Grade **VERY GOOD**

**ADDITIONAL GRADING INFORMATION**

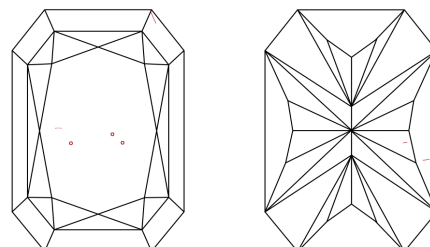
Polish **EXCELLENT**  
Symmetry **EXCELLENT**  
Fluorescence **NONE**  
Inscription(s) **803681856**

**PROPORTIONS**



Sample Image Used

**CLARITY CHARACTERISTICS**



**KEY TO SYMBOLS**

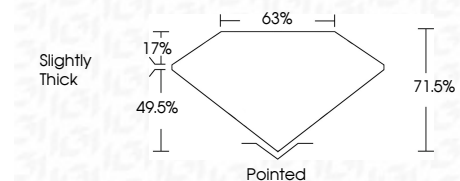
Red symbols indicate internal characteristics.  
Green symbols indicate external characteristics.

**COLOR**

D - F	G - J	K - M	N - R	S - Z	FANCY
Colorless	Near Colorless	Slightly Tinted	Very Light Color	Light Color	

**CLARITY**

FL	IF	VVS <sup>1-2</sup>	VS <sup>1-2</sup>	SI <sup>1-2</sup>	I <sup>1-3</sup>
Flawless	Internally Flawless	Very Very Slightly Included	Very Slightly Included	Slightly Included	Included



**ADDITIONAL GRADING INFORMATION**

Polish **EXCELLENT**  
Symmetry **EXCELLENT**  
Fluorescence **NONE**  
Inscription(s) **803681856**



**IGI**



May 29, 2026  
IGI Report No. 803681856  
CUT CORNERED RECT. MODIFIED BRILLIANT  
6.37 X 4.99 X 3.57 MM  
Carat Weight 1.00 CARAT  
Color Grade J  
Clarity Grade VS 1  
Cut Grade VERY GOOD  
Depth 71.5%  
Table 63%  
Girdle Slightly Thick  
Culet Pointed  
Polish EXCELLENT  
Symmetry EXCELLENT  
Fluorescence NONE  
Inscriptions(s) 803681856