



ELECTRONIC COPY

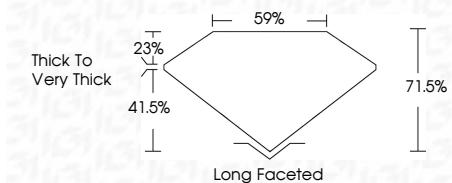
803629039
Report verification at igi.org



June 19, 2026
IGI Report Number **803629039**
Description **NATURAL DIAMOND**
Shape and Cutting Style **EMERALD CUT**
Measurements **6.40 X 4.63 X 3.31 MM**

GRADING RESULTS

Carat Weight **1.00 CARAT**
Color Grade **J**
Clarity Grade **VS 2**
Cut Grade **VERY GOOD**



ADDITIONAL GRADING INFORMATION

Polish **EXCELLENT**
Symmetry **VERY GOOD**
Fluorescence **NONE**
Inscription(s) **IGI 803629039**



IGI

June 19, 2026
IGI Report No. 803629039
EMERALD CUT
6.40 X 4.63 X 3.31 MM
1.00 CARAT
J
VS 2
VERY GOOD
71.5%
59%
Thick To Very Thick
Long Faceted
EXCELLENT
VERY GOOD
NONE
IGI 803629039

DIAMOND REPORT

June 19, 2026
IGI Report Number **803629039**
Description **NATURAL DIAMOND**
Shape and Cutting Style **EMERALD CUT**
Measurements **6.40 X 4.63 X 3.31 MM**

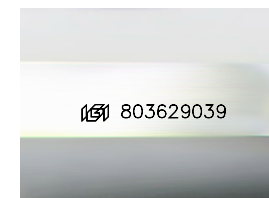
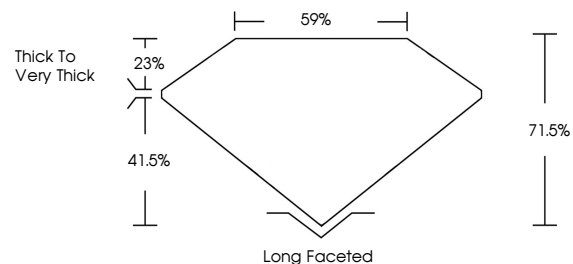
GRADING RESULTS

Carat Weight **1.00 CARAT**
Color Grade **J**
Clarity Grade **VS 2**
Cut Grade **VERY GOOD**

ADDITIONAL GRADING INFORMATION

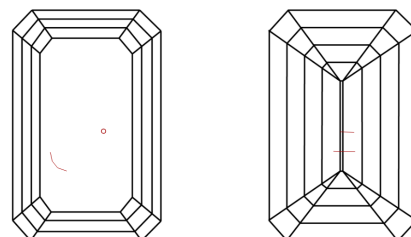
Polish **EXCELLENT**
Symmetry **VERY GOOD**
Fluorescence **NONE**
Inscription(s) **IGI 803629039**

PROPORTIONS



Sample Image Used

CLARITY CHARACTERISTICS



KEY TO SYMBOLS

Red symbols indicate internal characteristics.
Green symbols indicate external characteristics.

COLOR

D - F	G - J	K - M	N - R	S - Z	FANCY
Colorless	Near Colorless	Slightly Tinted	Very Light Color	Light Color	

CLARITY

FL	IF	VVS 1-2	VS 1-2	SI 1-2	I 1-3
Flawless	Internally Flawless	Very Very Slightly Included	Very Slightly Included	Slightly Included	Included

