



803622616
Report verification at igi.org



June 5, 2026
IGI Report Number **803622616**
Description **NATURAL DIAMOND**
Shape and Cutting Style **ROUND BRILLIANT**
Measurements **6.55 - 6.59 X 4.11 MM**
GRADING RESULTS
Carat Weight **1.11 CARAT**
Color Grade **F**
Clarity Grade **INTERNALLY FLAWLESS**
Cut Grade **EXCELLENT**

ELECTRONIC COPY

DIAMOND REPORT

June 5, 2026
IGI Report Number **803622616**
Description **NATURAL DIAMOND**
Shape and Cutting Style **ROUND BRILLIANT**
Measurements **6.55 - 6.59 X 4.11 MM**

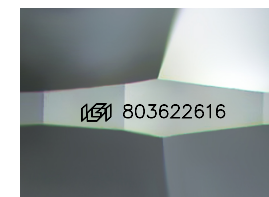
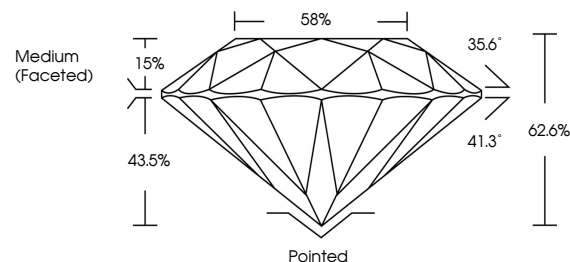
GRADING RESULTS

Carat Weight **1.11 CARAT**
Color Grade **F**
Clarity Grade **INTERNALLY FLAWLESS**
Cut Grade **EXCELLENT**

ADDITIONAL GRADING INFORMATION

Polish **EXCELLENT**
Symmetry **EXCELLENT**
Fluorescence **VERY SLIGHT**
Inscription(s) **803622616**

PROPORTIONS



Sample Image Used

CLARITY CHARACTERISTICS



KEY TO SYMBOLS

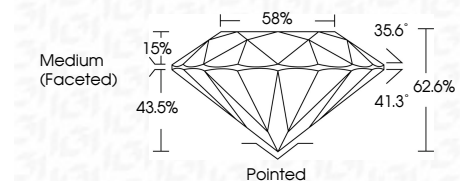
Red symbols indicate internal characteristics.
Green symbols indicate external characteristics.

COLOR

D - F	G - J	K - M	N - R	S - Z	FANCY
Colorless	Near Colorless	Slightly Tinted	Very Light Color	Light Color	

CLARITY

FL	IF	VVS ¹⁻²	VS ¹⁻²	SJ ¹⁻²	I ¹⁻³
Flawless	Internally Flawless	Very Very Slightly Included	Very Slightly Included	Slightly Included	Included



ADDITIONAL GRADING INFORMATION

Polish **EXCELLENT**
Symmetry **EXCELLENT**
Fluorescence **VERY SLIGHT**
Inscription(s) **803622616**



IGI



June 5, 2026
IGI Report No. 803622616
ROUND BRILLIANT
6.55 - 6.59 X 4.11 MM
1.11 CARAT
F
Color Grade **EXCELLENT**
Clarity Grade **EXCELLENT**
Depth 62.6%
Table 15%
Girdle 58%
Medium (Faceted)
Pointed
Polish **EXCELLENT**
Symmetry **EXCELLENT**
Fluorescence **VERY SLIGHT**
Inscription(s) 803622616